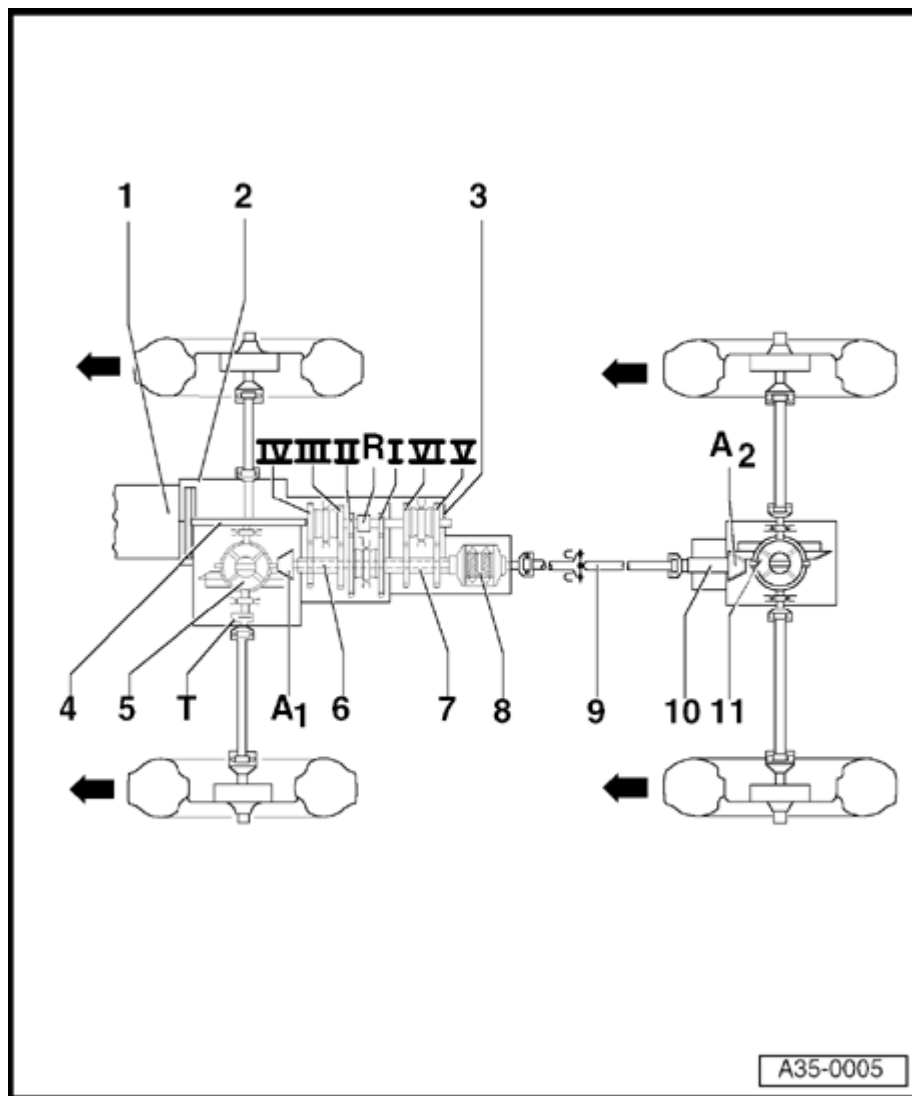


00-7



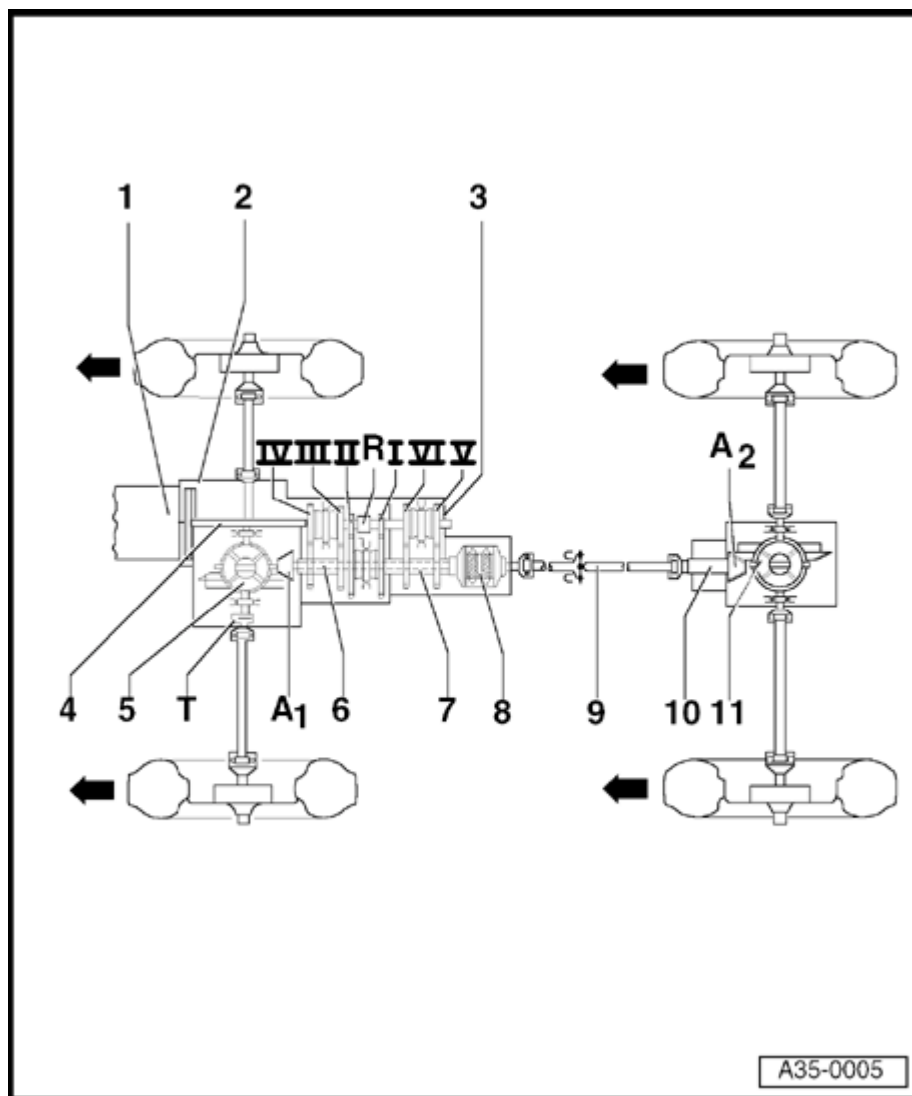
Transmission layout

- 1 - Engine
- 2 - Clutch
- 3 - Transmission
- 4 - Input shaft (main shaft)
- 5 - Front differential
- 6 - Front drive pinion (output shaft)
- 7 - Hollow shaft
- 8 - Torsen differential
- 9 - Driveshaft
- 10 - Rear drive pinion
- 11 - Rear differential

Note:

Arrows point in forward direction of travel.

00-8



I - 1st gear

II - 2nd gear

III - 3rd gear

IV - 4th gear

V - 5th gear

VI - 6th gear

R - Reverse gear

A1 - Front final drive

A2 - Rear final drive

T - Speedometer drive, electronic

Note:*Arrows point in forward direction of travel.*

Notes for performance test, brake test and tow starting/towing

Performance test on roller type test stand

The following must be noted when a vehicle with all wheel drive is to be driven onto a performance test stand:

- ◆ A four wheel test stand with four braked rollers must be used.

Brake test on the roller type test stand

The following must be noted when a vehicle with all wheel drive is to be driven onto a roller type test stand:

- ◆ A slow moving brake test stand (to 5,5 km/h) must be used. During this, no gear may be selected.

Tow starting and towing vehicles

⇒ [Repair Manual, Maintenance](#)