

Drive flange housing, disassembling and assembling

Assembly overview

Note:

Removing and installing drive flange housing ⇒ [Page 39-81](#) .

1 - Drive flange

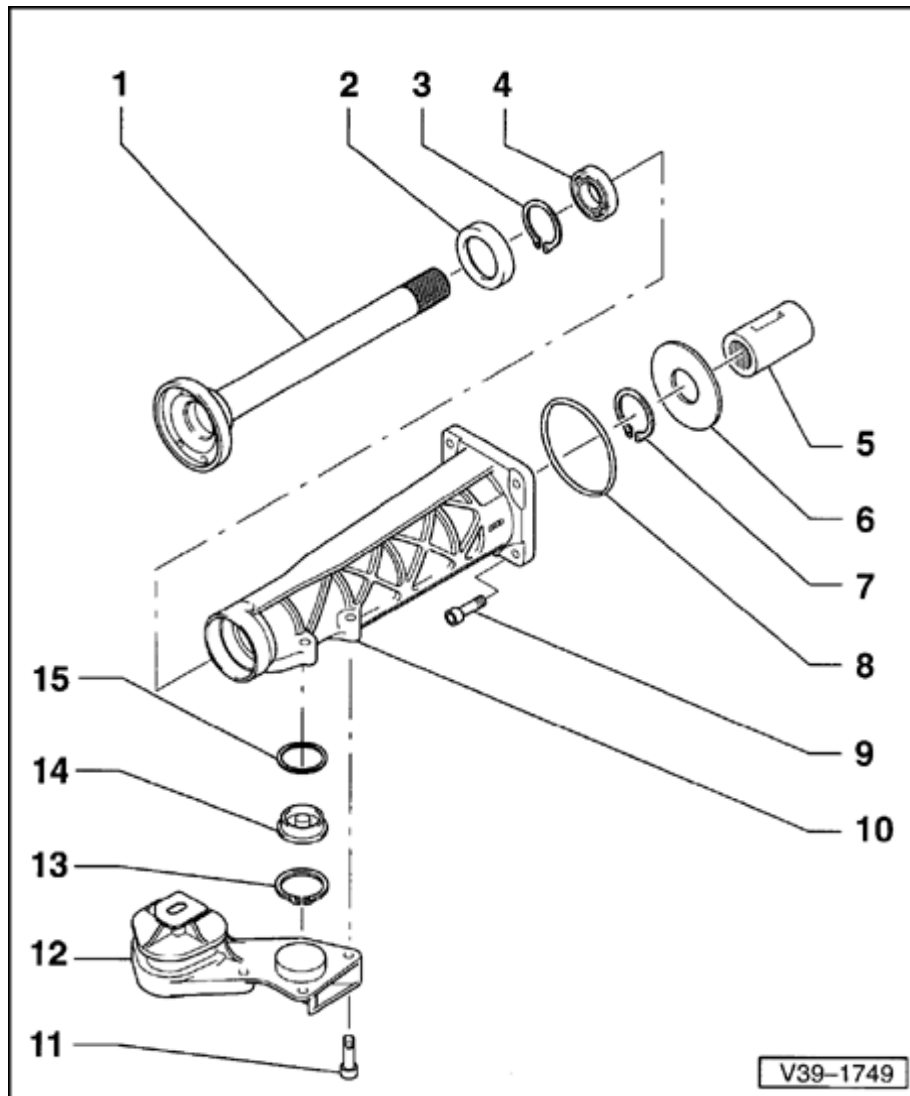
- ◆ Removing ⇒ [Page 39-93](#)
- ◆ When installing drive flange, circlip - 7 - should be inserted at the same time through hole in housing ⇒ [Page 39-97](#)

2 - Seal

- ◆ Prising off ⇒ [Page 39-94](#)
- ◆ Driving in ⇒ [Page 39-96](#)

3 - Circlip

- ◆ Removing ⇒ [Page 39-94](#)



4 - Grooved ball bearing for drive flange

- ◆ Pulling out ⇒ [Page 39-95](#)
- ◆ Pressing in ⇒ [Page 39-96](#)

5 - Sleeve

- ◆ Pulling off ⇒ [Page 39-92](#)
- ◆ Pressing on ⇒ [Page 39-97](#)

6 - Baffle plate

- ◆ Only press out if damaged
- ◆ Installing ⇒ [Page 39-95](#)

7 - Circlip

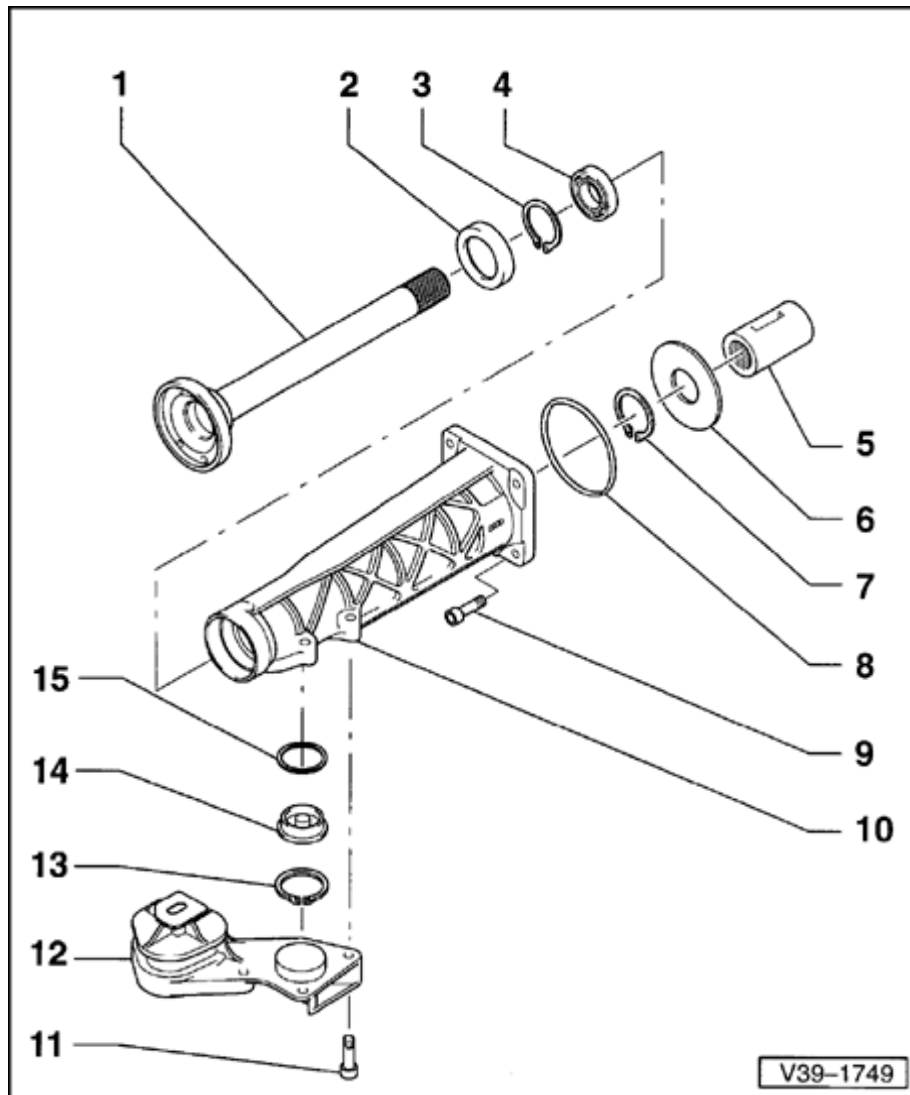
- ◆ To remove drive flange, open out circlip ⇒ [Page 39-93](#)

8 - O-ring

- ◆ Always replace

9 - Bolt, 35 Nm

- ◆ Secures drive flange housing to rear final drive housing

**10 - Drive flange housing****11 - Bolt, 40 Nm**

- ◆ Secures final drive support to drive flange housing

12 - Final drive support**13 - Circlip**

- ◆ Removing ⇒ [Page 39-92](#)

14 - Cover cap

- ◆ Removing ⇒ [Page 39-92](#)

15 - O-ring

- ◆ Always replace

Drive flange housing, disassembling and assembling

Special tools, testers and auxiliary items

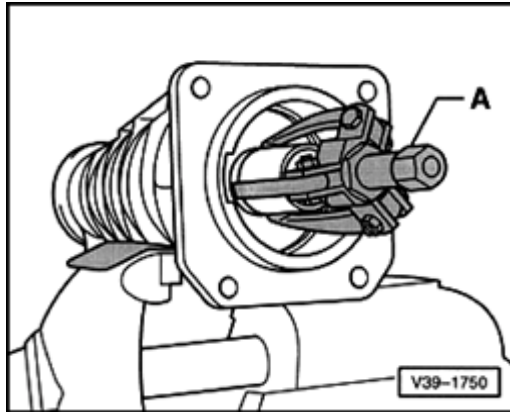
- ◆ Press plate VW 402
- ◆ Press tool VW 409
- ◆ Press tool VW 412
- ◆ Press tool VW 433
- ◆ Multipurpose tool VW 771 and 771/15
- ◆ Mandrel 2051
- ◆ Drift 2062
- ◆ Tappet compressor 2078
- ◆ Internal puller Kukko 21/5

Note:

Removing and installing drive flange housing ⇒
[Page 39-81](#) .

Disassembling

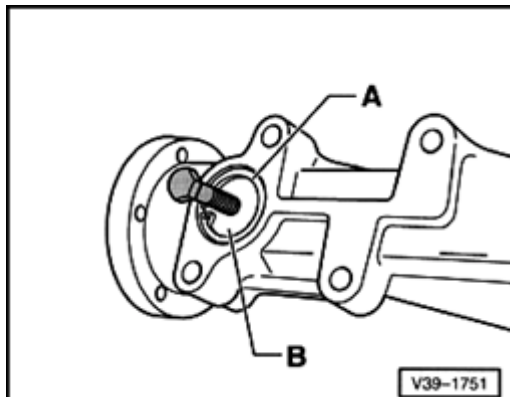
- Clamp drive flange housing in vice (use soft jaws).

**A**

- Pull off sleeve.

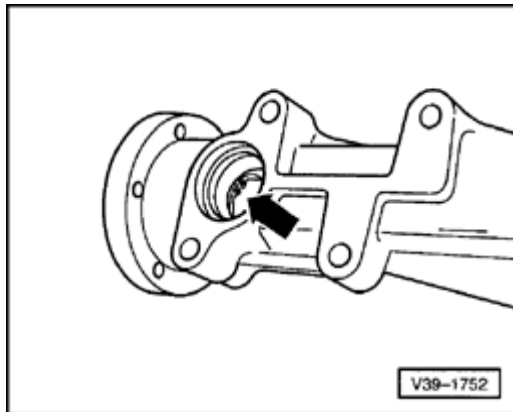
A - Internal puller 30-37 mm, e.g. Kukko 21/5

- Detach final drive support.

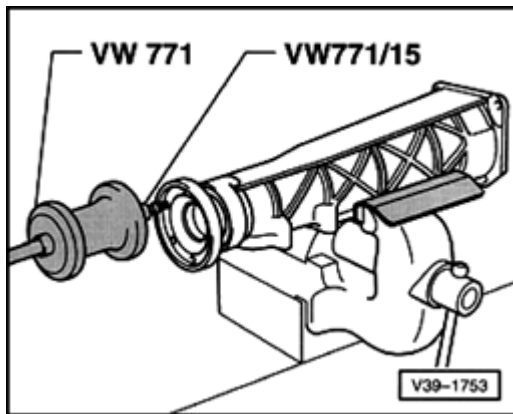
**A**

- Remove circlip -A-.
- Screw M8 bolt into thread in cover cap -B- and pull out cover cap.

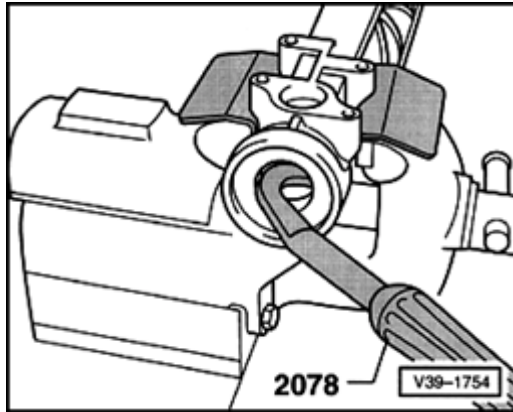
39-93



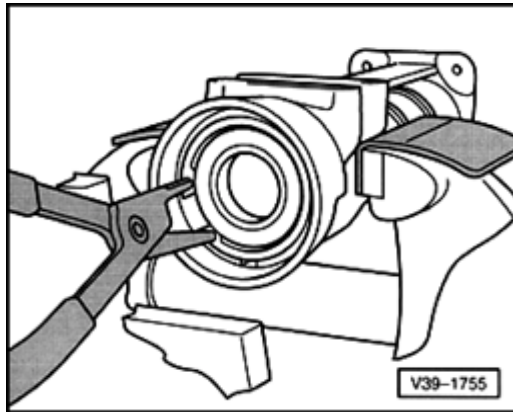
- A**
- Open out circlip (arrow) on drive flange and push circlip toward splines.



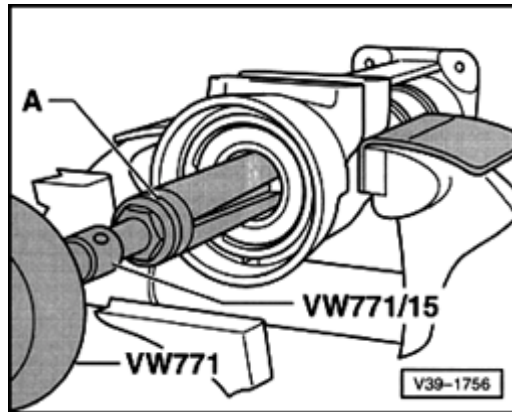
- A**
- Remove drive flange.
 - Take circlip out of drive flange housing.



A - Pry out seal.



A - Remove circlip.



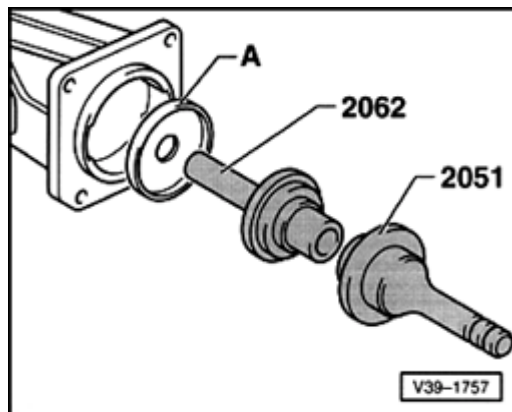
- A** - Pull out grooved ball bearing for drive flange.
- A - Internal puller 30-37 mm, e.g. Kukko 21/5

Note:

The bearing will be damaged when it is removed.

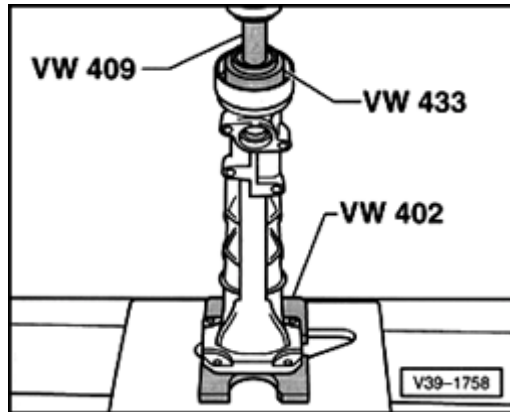
Only if baffle plate is damaged:

- If baffle plate is damaged, press it out with drive flange.



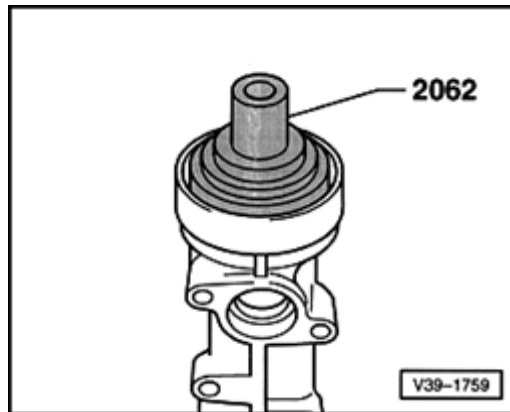
- A** - To install, drive in baffle plate -A- onto stop.

Assembling



A

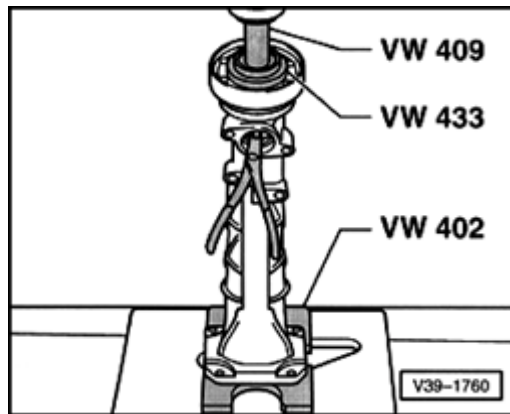
- Press grooved ball bearing into drive flange housing.
- Fit outer circlip.
- Pack space between sealing lip and dust lip of seal with sealing grease G52 128 A1.



A

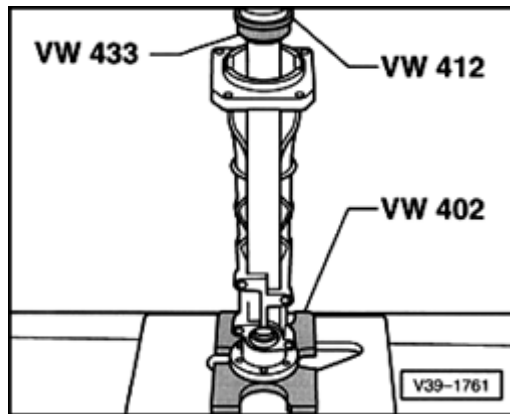
- Drive in seal onto stop.

39-97



A

- Insert inner circlip in drive flange housing and hold in position with pliers; press in drive flange.
- Fit circlip in groove.



A

- Press sleeve onto drive flange as far as stop.
- Install cover cap with seal.
- Fit circlip.
- Install final drive support.
- Fit O-ring on drive flange housing.