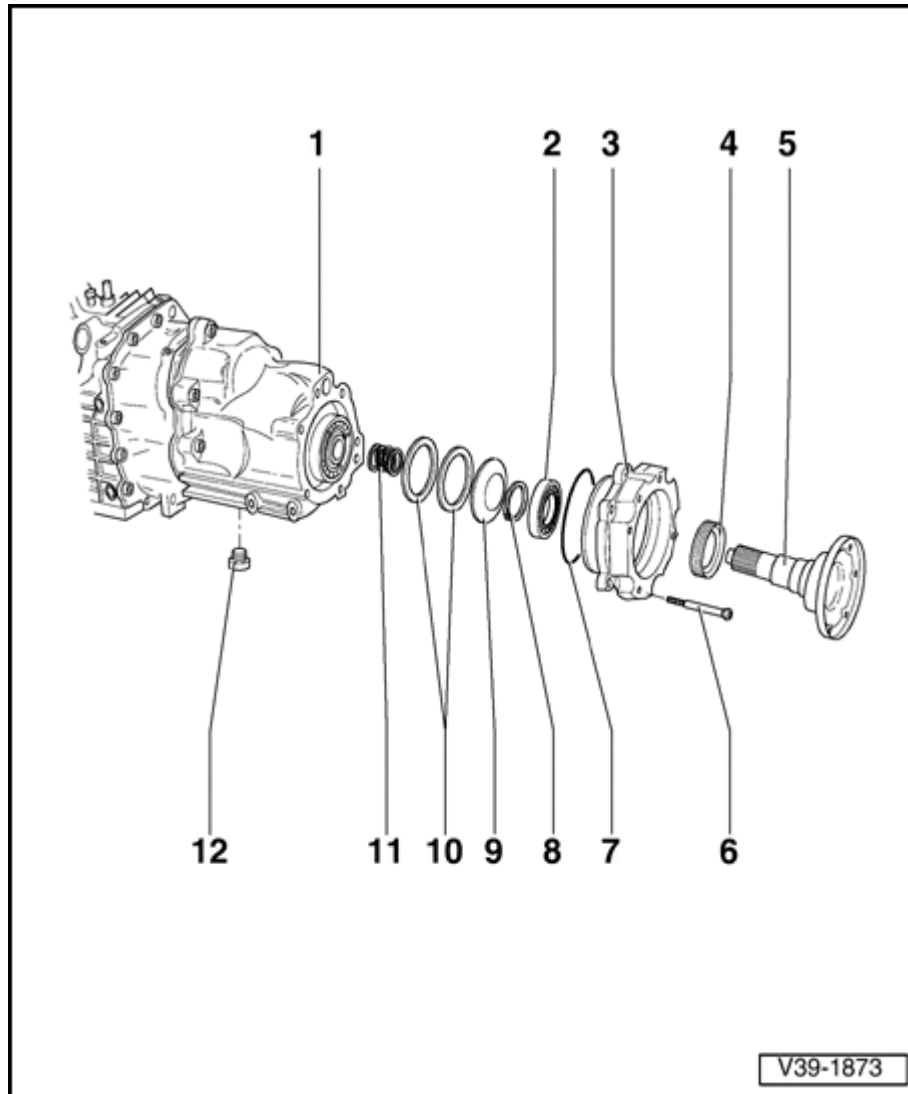


Seal and grooved ball bearing for flange for driveshaft on transmission, replacing

Special tools, testers and auxiliary items required:

- ◆ Drip tray V.A.G 1306
- ◆ Adapter VW 295a
- ◆ Thrust plate VW 401
- ◆ Thrust plate VW 402
- ◆ Press tool VW 407
- ◆ Tube VW 415a
- ◆ Tube VW 416b
- ◆ Press tool VW 433
- ◆ Thrust pad VW 454
- ◆ Extractor lever VW 681

- ◆ Multi-purpose tool 771/1 with attachment 771/15 and stud M8/M10
- ◆ Punch 2005
- ◆ Shim, Part No. 016 311 391 B



1 - Transmission

2 - Grooved ball bearing

3 - Bearing housing on balance weight

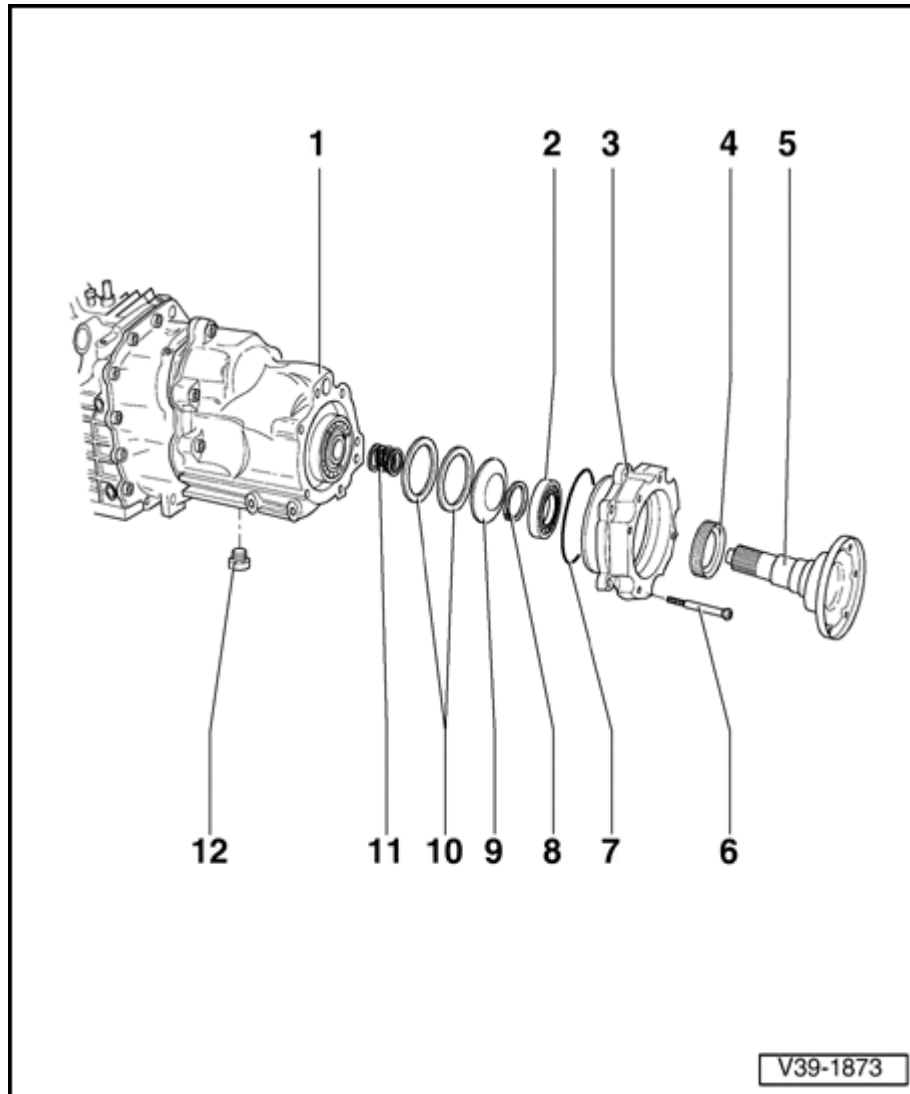
4 - Seal

◆ Driving in ⇒ [Page 39-13](#)

5 - Drive flange

6 - Bolt, 25 Nm

◆ Qty. 6



7 - O-ring

- ◆ Always replace

8 - Circlip

9 - Spring plate

- ◆ Mark installation position when removing:
larger diameter (concave side) toward
shims - 10

10 - Shims

11 - Spring

12 - Oil drain plug, 40 Nm

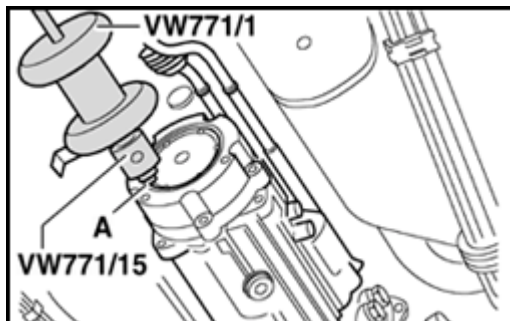
Removing

- Transmission installed
- Disconnect driveshaft at the front ⇒ [Page 39-68](#) , lift clear and tie-up on selector linkage.
- Place a drip tray underneath.
- Unscrew rear oil drain plug (on end cover) and drain transmission oil.
- Unscrew securing bolts for bearing housing.

Note:

Generally, the bearing housing is pressed out via the spiral spring when loosening bolts from cover.

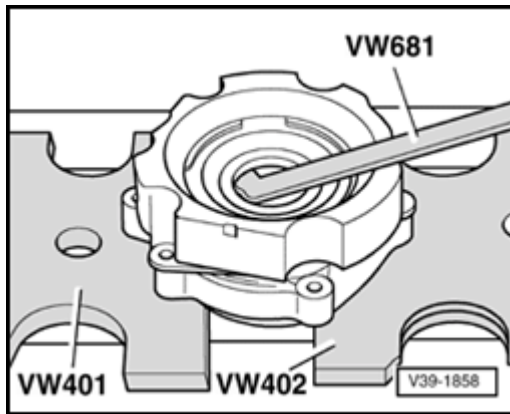
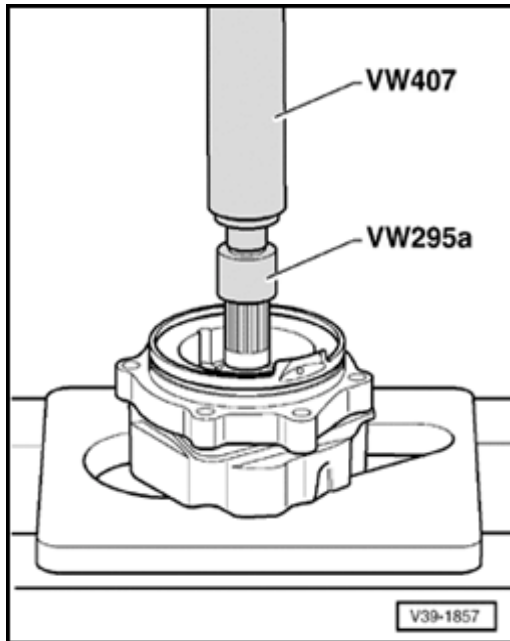
If the bearing housing is not pressed off:



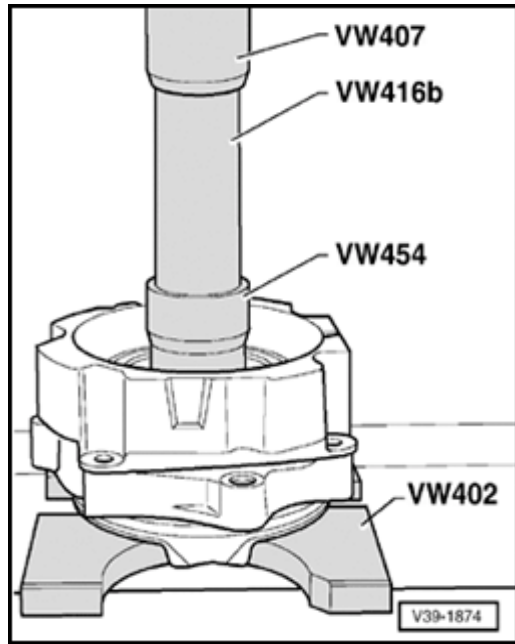
A

- Pull drive flange together with bearing housing and balance weight off end cover.
- A - M8/M10 stud
- Take off bearing housing.

- Take circlip off drive flange.
- Press out drive flange.



- Pull out seal for drive flange.
- Thoroughly clean seal seat.

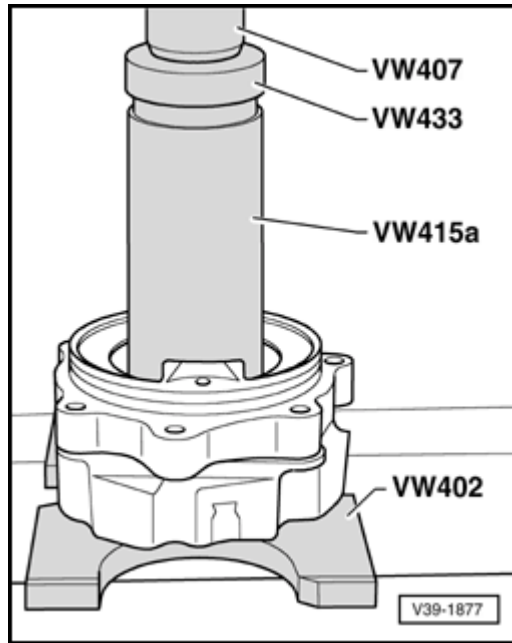


A

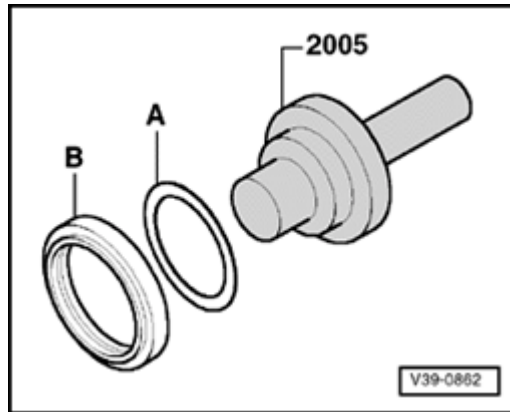
- Press out grooved ball bearing.

Installing

- A - Press grooved ball bearing in bearing housing.



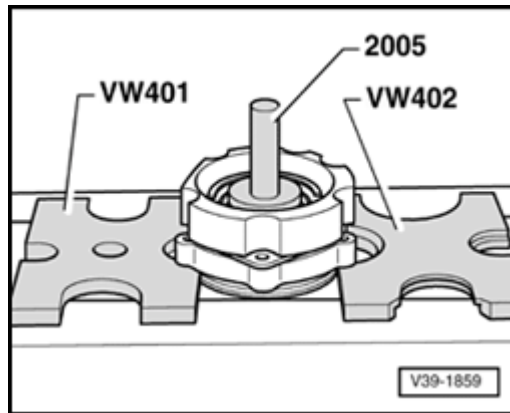
39-13



A

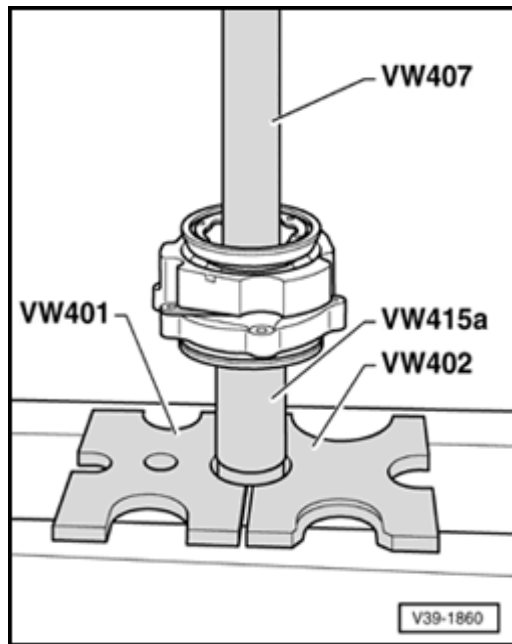
- Lightly oil outer circumference of seal -B-.
- Fill space between sealing lips and dust lips with sealing grease G52 128 A1.
- Fit seal with shim -A-, Part No. 016 311 391 B (1.7 mm thick) onto punch 2005.

Installation position: open side of seal toward transmission.



A

- Drive in seal for drive flange.
- Remove shim after driving in.



A

- Press in drive flange.
- Fit circlip onto drive flange.
- Lightly oil O-ring and fit into bearing housing groove.
- Insert spring plate and shims into bearing housing.
Installation position: ⇒ [Page 39-8](#)
- Slide coil spring onto drive flange.
- Tighten securing bolts for bearing housing in diagonal sequence and in stages to 25 Nm.
- Bolt on driveshaft ⇒ [Page 39-71](#) .
- Top up oil in transmission and check oil level ⇒ [Page 34-39](#) .