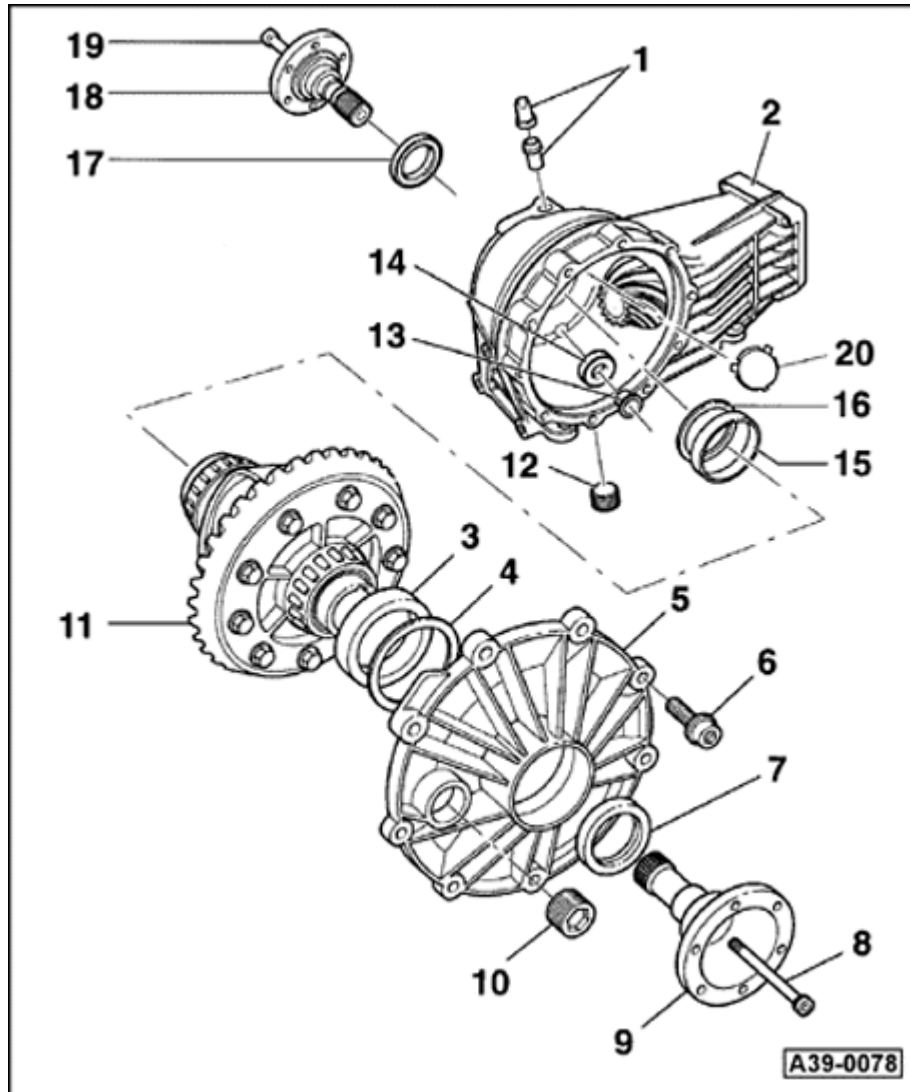


39-112



Differential, removing and installing

Note:

- ◆ General repair instructions ⇒ [Page 00-11](#) .
- ◆ Secure final drive on a repair stand ⇒ [Page 39-108](#) .
- ◆ Adjustments are required when replacing components marked 1) ⇒ [Page 39-150](#) , Adjustment overview

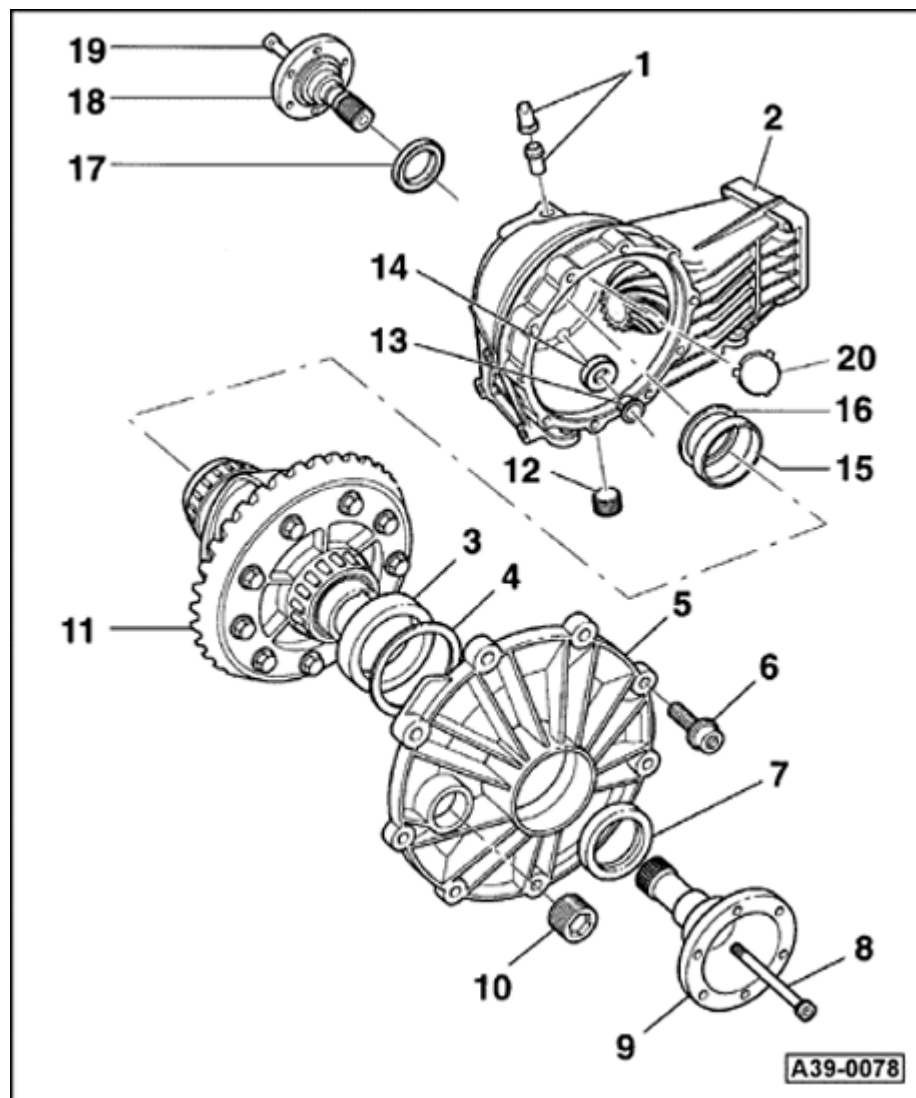
1 - Breather sleeve

- ◆ With rubber valve
- ◆ Installation position ⇒ [Fig. 3](#)

2 - Final drive housing ¹⁾

- ◆ With drive pinion
- ◆ Removing and installing drive pinion ⇒ [Page 39-134](#)

39-113



3 - Outer race for large tapered roller bearing

1)

◆ Driving out ⇒ *Fig. 7* , ⇒ [Page 39-129](#)

◆ Driving in ⇒ *Fig. 8* , ⇒ [Page 39-130](#)

4 - Shim "S1"

◆ Note thickness

◆ Adjustment overview ⇒ [Page 39-150](#)

5 - Cover for final drive ¹⁾

◆ With seal

◆ Replace O-ring

◆ Lubricate O-ring with oil when installing

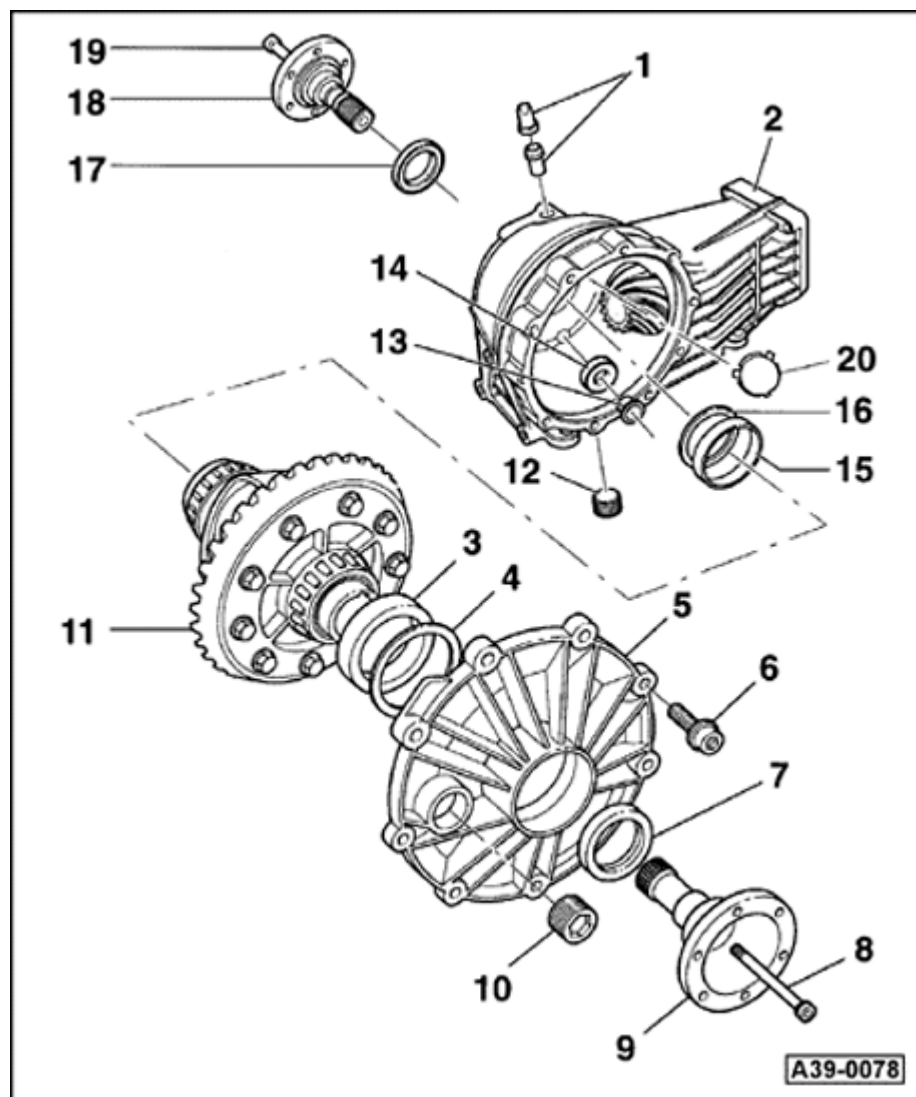
6 - Torx bolt, 25 Nm

7 - Seal, right

◆ Replacing ⇒ [Page 39-98](#)

8 - Hex socket head bolt, 25 Nm

39-114

**9 - Drive flange, right**

◆ Removing and installing ⇒ [Fig. 1](#)

10 - Oil filler plug, 35 Nm**11 - Differential with ring gear ¹⁾**

◆ Disassembling and assembling ⇒ [Page 39-120](#)

12 - Oil drain plug, 35 Nm**13 - Bushing**

◆ Holds magnet in position

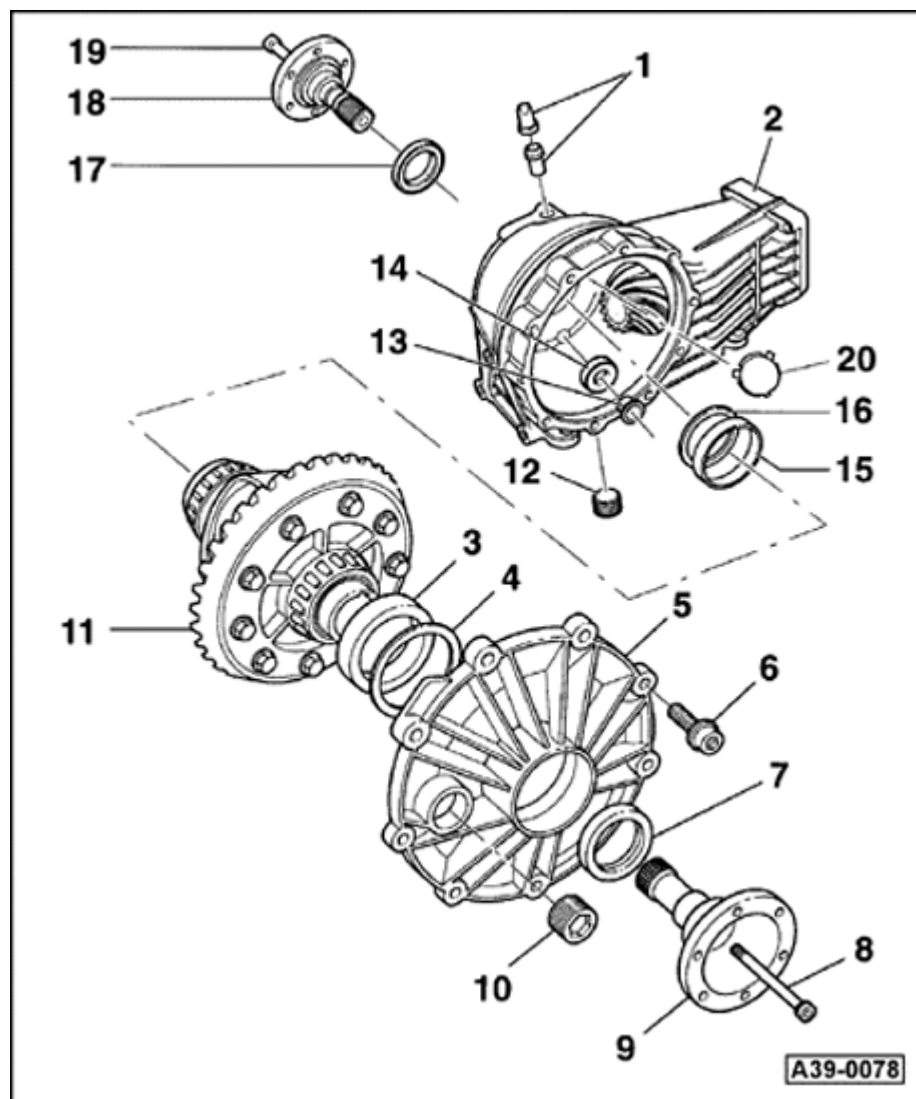
◆ Knock in onto stop

14 - Magnet**15 - Outer race for small tapered roller bearing ¹⁾**

◆ Knocking out ⇒ *Fig. 1* , ⇒ [Page 39-126](#)

◆ Pressing in ⇒ *Fig. 2* , ⇒ [Page 39-126](#)

39-115

**16 - Shim "S2"**

- ◆ Note thickness
- ◆ Adjustment overview ⇒ [Page 39-150](#)

17 - Seal, left

- ◆ Replacing ⇒ [Page 39-98](#)

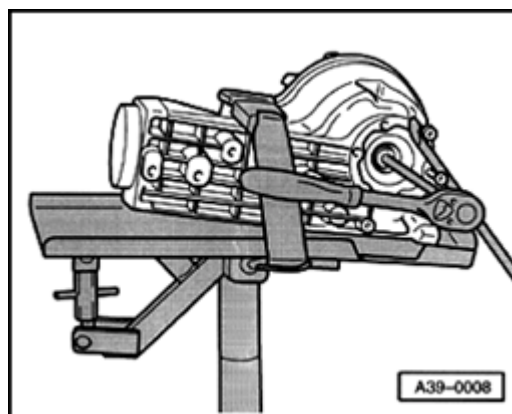
18 - Drive flange, left

- ◆ Removing and installing ⇒ [Fig. 1](#)

19 - Hex socket head bolt, 25 Nm**20 - Cover**

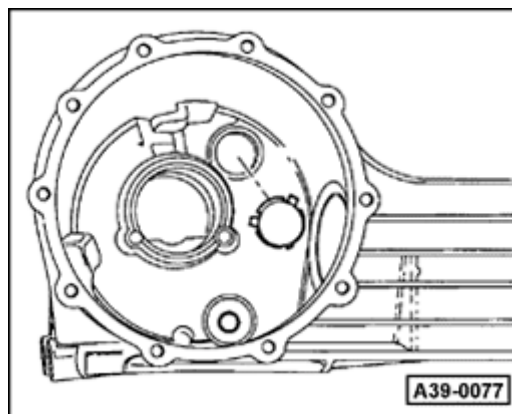
- ◆ Installing ⇒ [Fig. 2](#)

39-116



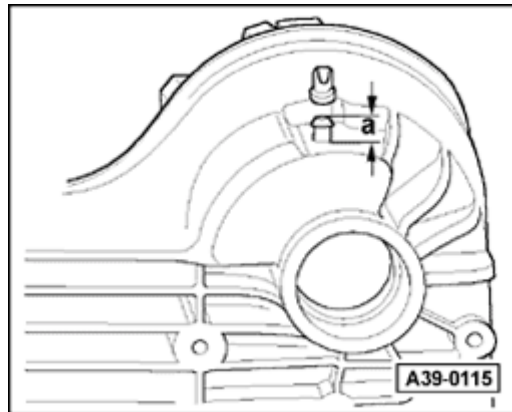
A **Fig. 1 Removing and installing drive flange**

- To loosen securing bolt, screw two bolts into drive flange and counter-hold with a lever.
- Pull out drive flange using bolts already screwed in.



A **Fig. 2 Pressing cover onto stop**

39-117



A

Fig. 3 Position of breather sleeve

The breather sleeve should project 13 mm (distance "a") out of the housing after pressing in.

The slot in the rubber valve should be in line with the direction of travel.

Removing and installing differential

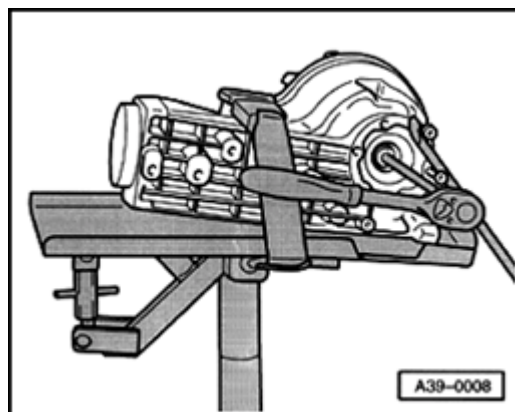
- Rear final drive removed

Special tools, testers and auxiliary items

- ◆ Drip tray V.A.G 1306

Removing

- Secure complete rear final drive on a repair stand ⇒ [Page 39-108](#) .
- Place drip tray V.A.G 1306 underneath and drain oil.
- Fill space between sealing lip and dust lip with sealing grease G52 128 A1.



A

- Remove left and right-hand drive flanges.
- To loosen securing bolt, screw two bolts into drive flange and counter-hold with a lever.
- Mark drive flanges (for left and right sides).
- Pull out drive flange using the bolts already screwed in.
- Unscrew securing bolts from cover for final drive.
- Take cover for final drive off axle housing and remove differential.

Installing

Installation is carried out in the reverse order, when doing this note the following:

- Insert differential.
- Replace O-ring for cover for final drive and oil when installing.
- Fit cover for final drive on final drive housing and tighten in diagonal sequence to 25 Nm.
- Replace drive flange oil seals ⇒ [Page 39-98](#) .
- Fill space between sealing and dust lips with sealing grease G52 128 A1.
- Install drive flanges and tighten to 25 Nm.
- Top-up gear oil in rear final drive and check oil level ⇒ [Page 39-80](#) .

