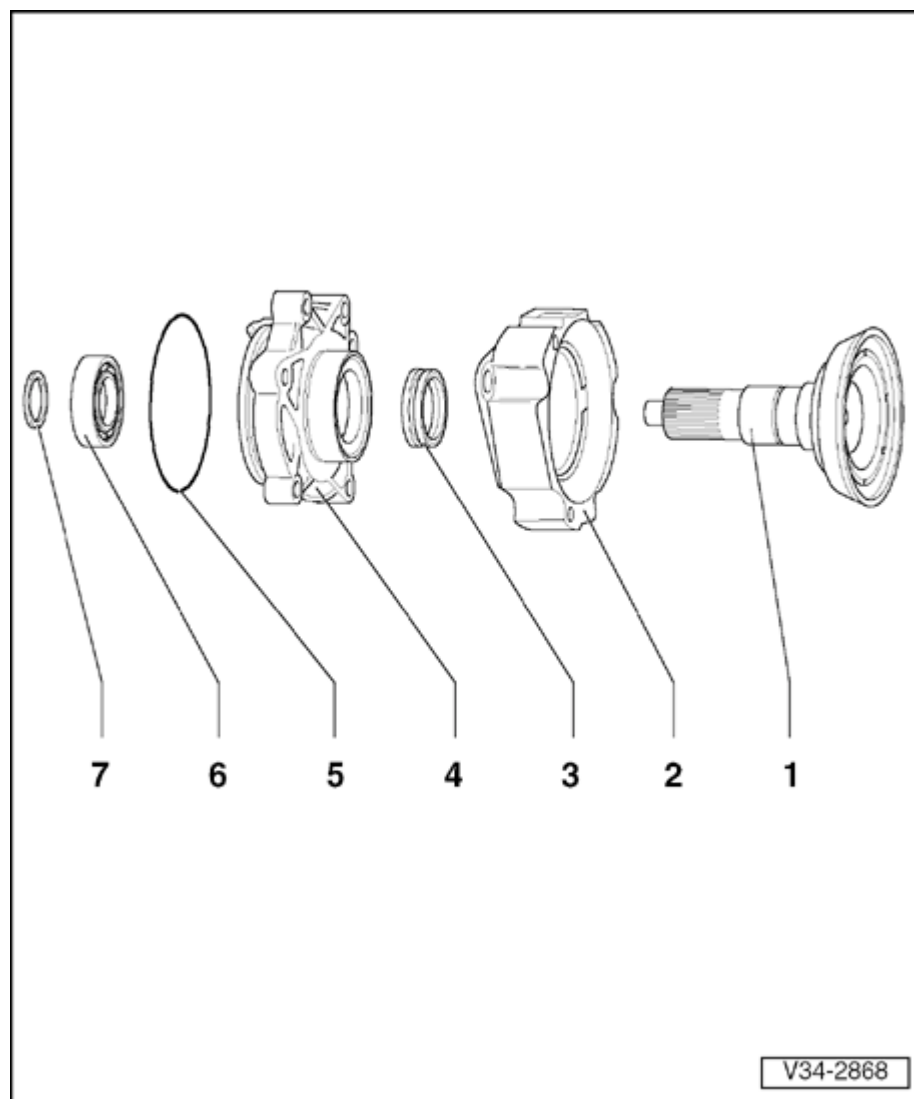


Bearing housing, disassembling and assembling

Special tools, testers and auxiliary items required:

- ◆ Adapter VW 295a
- ◆ Thrust plate VW 401
- ◆ Thrust plate VW 402
- ◆ Press tool VW 407
- ◆ Press tool VW 412
- ◆ Tube VW 415a
- ◆ Tube VW 416b
- ◆ Press tool VW 433
- ◆ Thrust pad VW 454
- ◆ Support rails VW 457

- ◆ Extractor lever VW 681
- ◆ Punch 2005
- ◆ Thrust pad 2007
- ◆ Shim, Part No. 016 311 391 B

**1 - Drive flange**

- ◆ Pressing out ⇒ [Fig. 1](#)
- ◆ Pressing in ⇒ [Fig. 2](#)

2 - Balance weight

- ◆ Pressing off ⇒ [Fig. 3](#)
- ◆ Pressing on ⇒ [Fig. 4](#)

3 - Seal

- ◆ Pulling out ⇒ [Fig. 5](#)
- ◆ Preparing for installation ⇒ [Fig. 6](#)
- ◆ Driving in ⇒ [Fig. 7](#)

4 - Bearing housing**5 - O-ring**

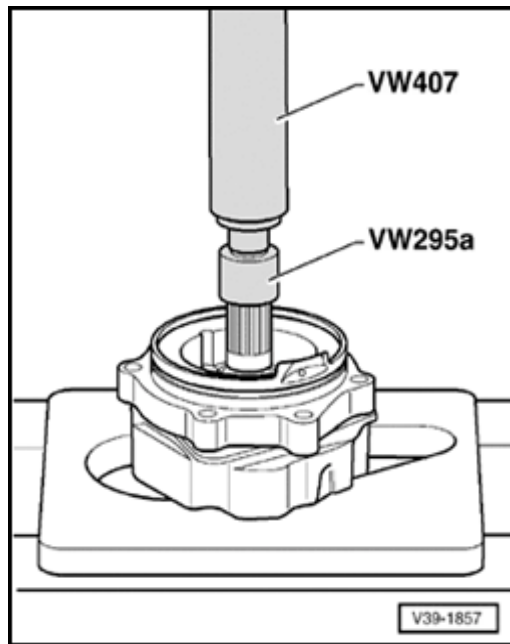
- ◆ Always replace
- ◆ Lightly oil before installing

6 - Ball bearing for drive flange

- ◆ Pressing off ⇒ [Fig. 8](#)
- ◆ Pressing in ⇒ [Fig. 9](#)

7 - Circlip

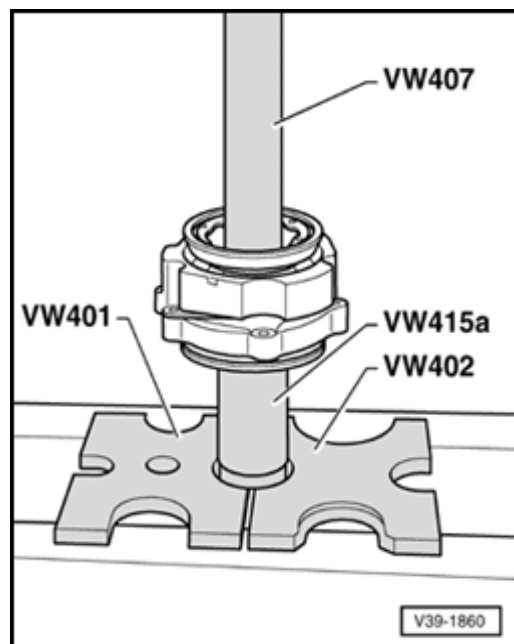
34-91



A

Fig. 1 Pressing out drive flange

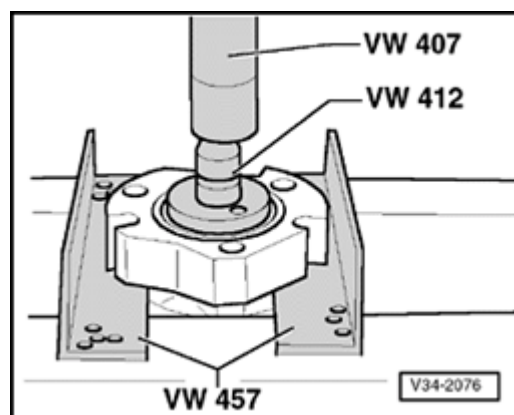
- Before pressing out drive flange remove circlip.



A

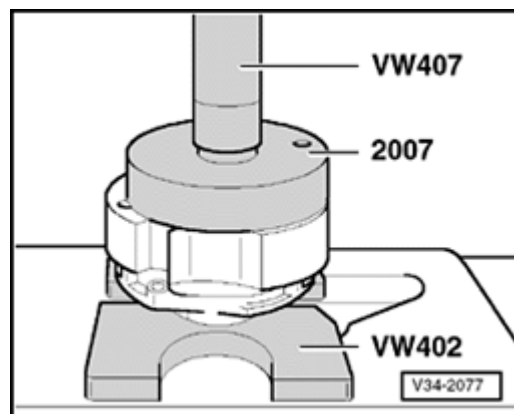
Fig. 2 Pressing in drive flange

- Before pressing in drive flange, press on balance weight ⇒ [Fig. 4](#) .
- Fit circlip.



A

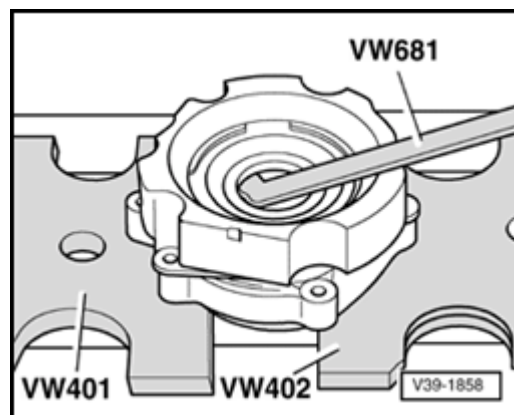
Fig. 3 Pressing off balance weight



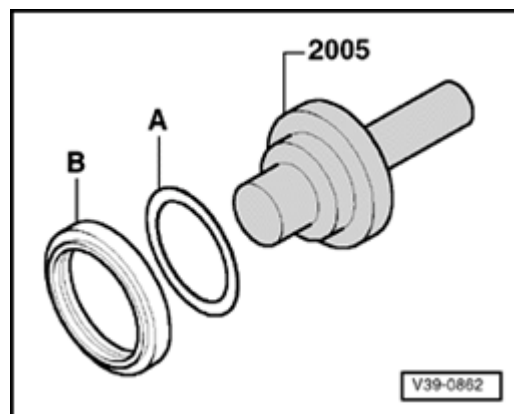
A Fig. 4 Pressing on balance weight

Note:

Note position of holes.



A Fig. 5 Pulling out seal



A

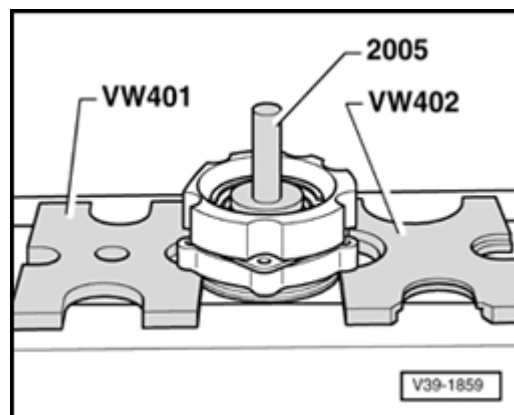
Fig. 6 Preparing seal for installation

A - Shim Part No. 016 311 391 B (1.7 mm thick)

B - Seal

- Fill space between sealing and dust lips with sealing grease G52 128 A1.
- Fit shim and seal onto tool one after the other.

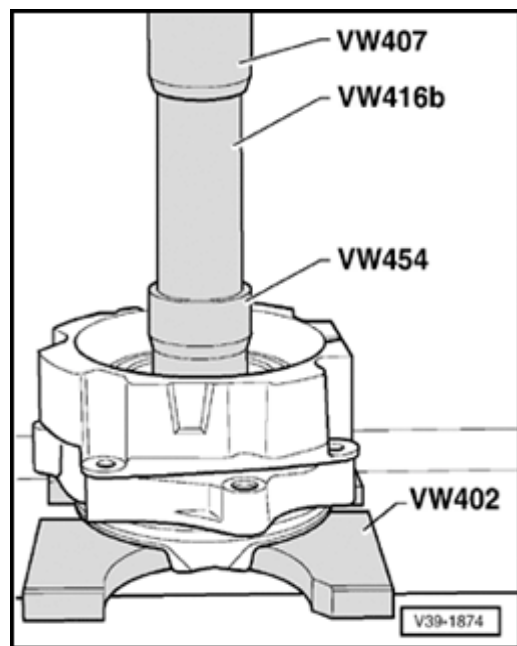
Installation position: open side of seal towards bearing housing



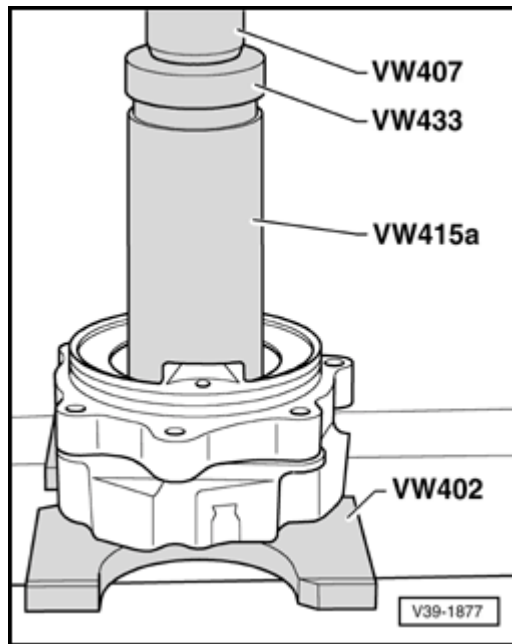
A

Fig. 7 Driving in seal

- Remove shim.



A Fig. 8 Pressing out ball bearing for drive flange



A

Fig. 9 Pressing in ball bearing for drive flange