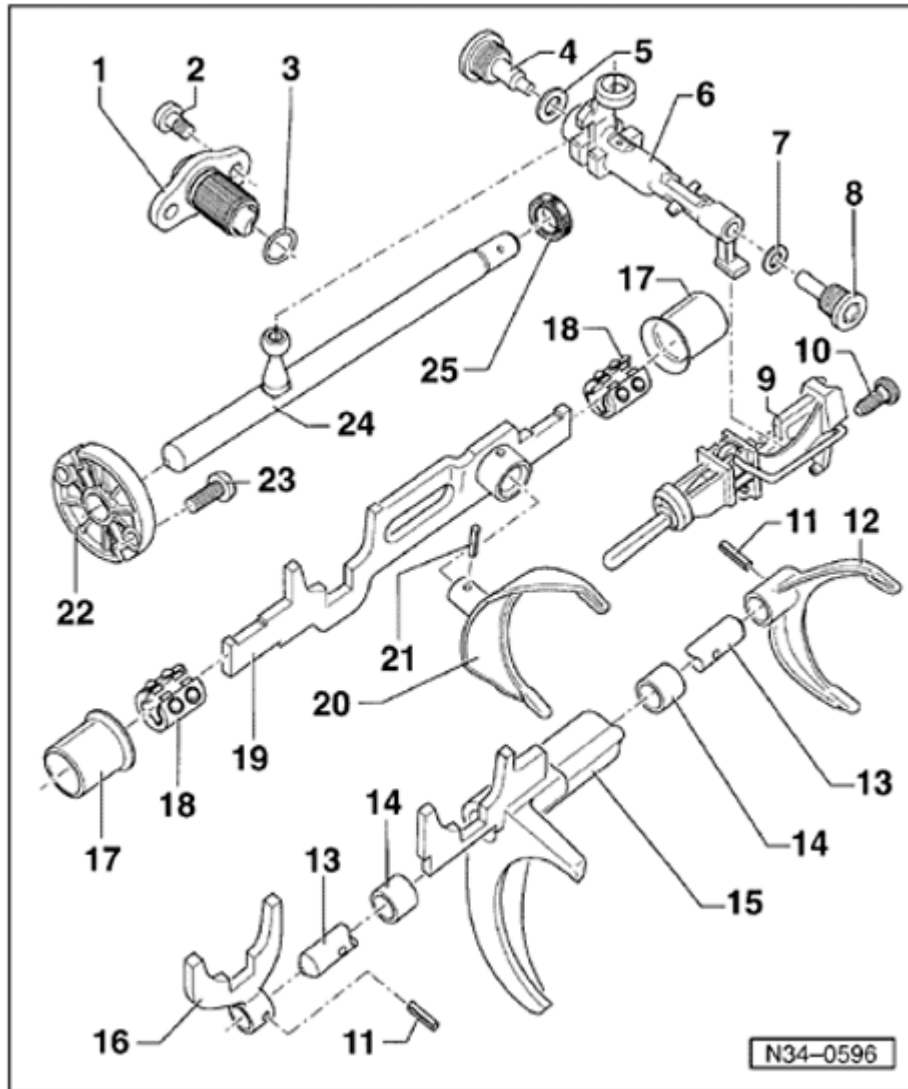


Transmission selector mechanism, disassembling and assembling

Special tools and equipment

- ◆ VW295 needle bearing drift
- ◆ VW295A needle bearing drift
- ◆ VW401 thrust plate
- ◆ VW423 sleeve
- ◆ VW472/2 spacer sleeve
- ◆ VW771 peening tool
- ◆ Kukko 21/4 extractor

**Note:**

For the installation position of the complete selector mechanism in transmission ⇒ [Fig. 6](#) .

1 - Gear lock 5th and reverse gear

◆ Removing and installing ⇒ [Page 34-69](#)

2 - Torx® bolt

◆ 10 Nm (7 ft lb)

3 - O-ring

◆ Always replace

4 - Right stop bolt

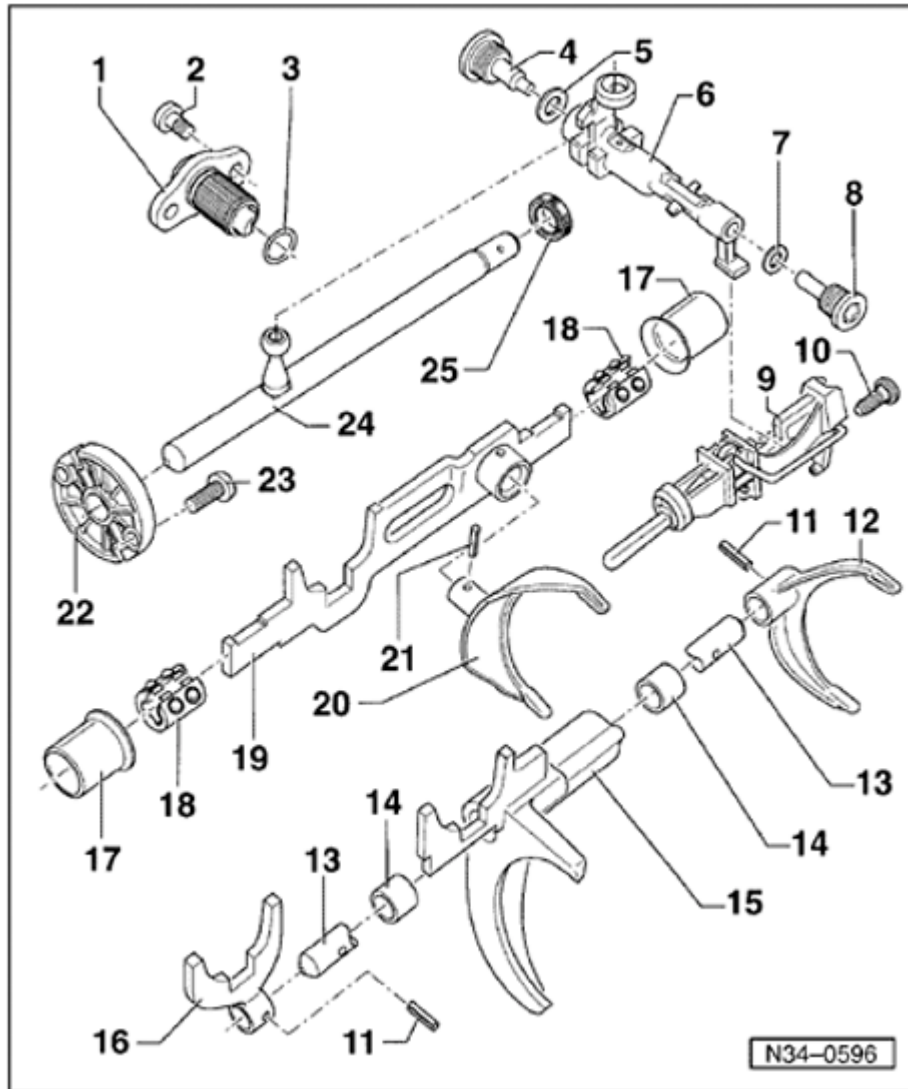
◆ 40 Nm (30 ft lb)

5 - Sealing washer**6 - 7Relay shaft****8 - Sealing washer****9 - Left stop bolt**

◆ 40 Nm (30 ft lb)

10 - Shift detent**11 - Torx® bolt**

◆ 25 Nm (18 ft lb)



12 - Roll pin

13 - 5th and reverse gear shift fork

◆ Installation position ⇒ [Fig. 1](#)

14 - Shift rod for 1st and 2nd gear and for 5th and reverse gear

15 - Ball sleeve

◆ Removing and installing ⇒ [Fig. 2](#)

16 - Shift fork for 1st and 2nd gear

17 - Coupling plate

◆ Installation position ⇒ [Fig. 1](#)

18 - 19 Bushing for 3rd and 4th gear

◆ Removing ⇒ [Fig. 3](#)

◆ Installing ⇒ [Fig. 4](#)

20 - Ball sleeve

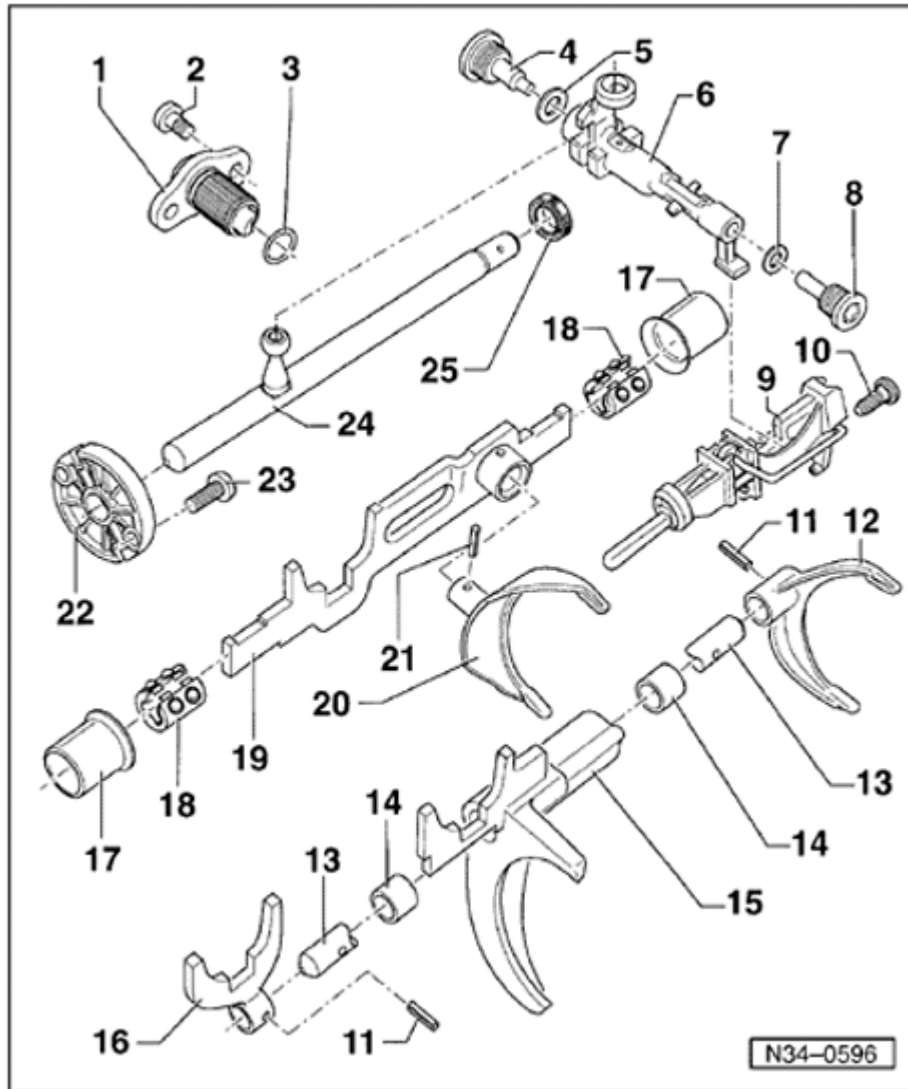
◆ Pry off selector rod using screwdriver

◆ Press onto selector rod

21 - Shift rod for 3rd and 4th gear

22 - Shift fork for 3rd and 4th gear

23 - Roll pin

**24 - Cover**

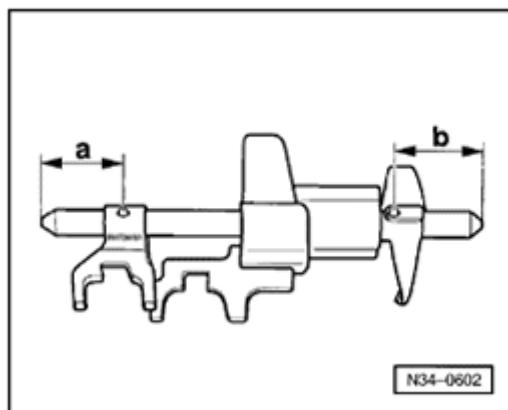
- ◆ For shift rod

25 - Torx® bolt

- ◆ 20 Nm (15 ft lb)

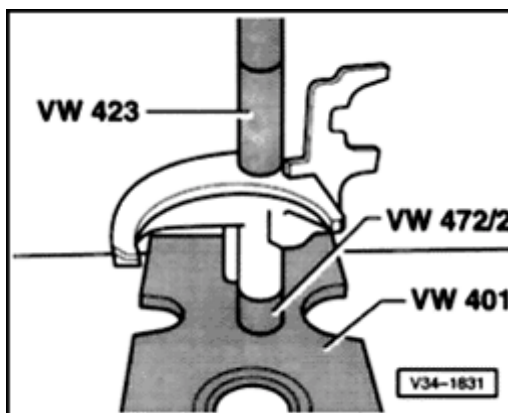
26 - Shift rod**27 - Sealing washer**

- ◆ Pry out using screwdriver
- ◆ Installation position ⇒ [Fig. 5](#)

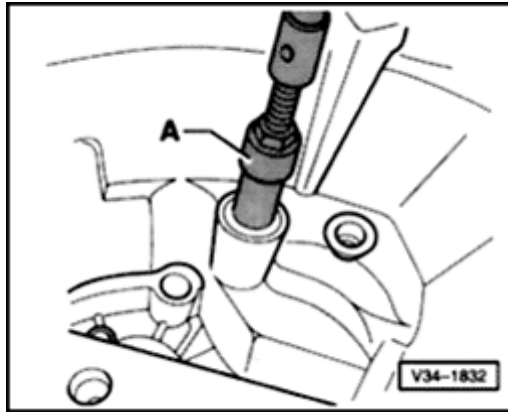


A Fig. 1 Installation position of 5th and reverse gear shift fork and coupling plate for shift rod

- ◆ Dimension -a-: 55 mm (2.165 in.)
- ◆ Dimension -b-: 60 mm (2.362 in.)



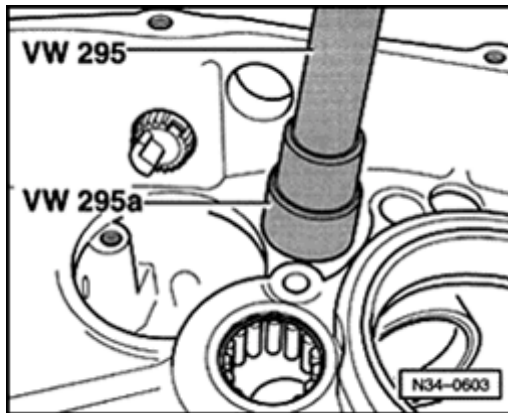
A Fig. 2 Removing and installing ball sleeve



A

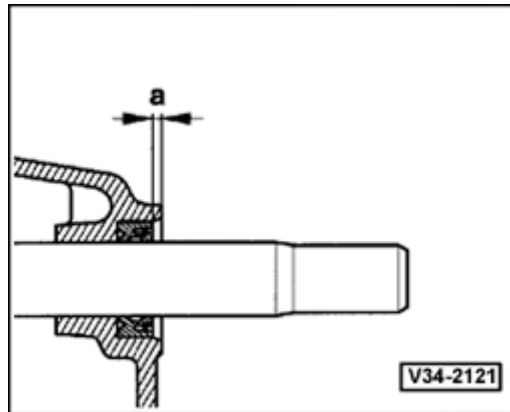
Fig. 3 Removing bushing for 3rd and 4th gear shift rod

A - Internal puller 22-28 mm, e.g. Kukko 21/4 extractor, in conjunction with VW771 slide hammer-complete set.



A

Fig. 4 Driving in bushing for 3rd and 4th gear shift rod onto stop

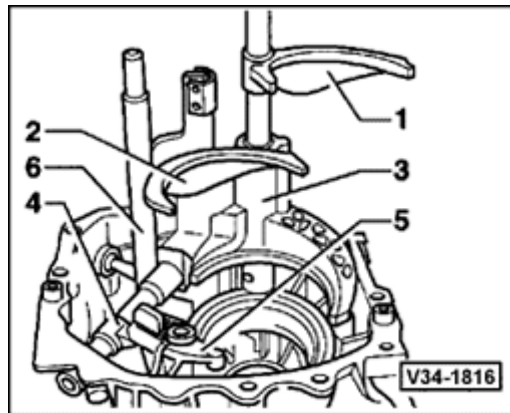


A

Fig. 5 Installation position of sealing washer

- Lubricate sealing lip and dust lip with gear oil.
- Lightly oil outer circumference of seal.

Dimension -a- : 1 mm (0.04 in.)



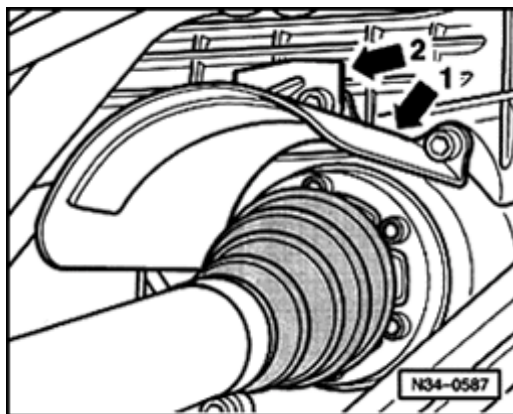
A

Fig. 6 Installation position of complete selector mechanism in transmission

- 1 - Shift fork for 5th and reverse gear
- 2 - Shift fork for 3rd and 4th gear
- 3 - Shift fork for 1st and 2nd gear
- 4 - Relay shaft
- 5 - Shift detent
- 6 - Shift rod

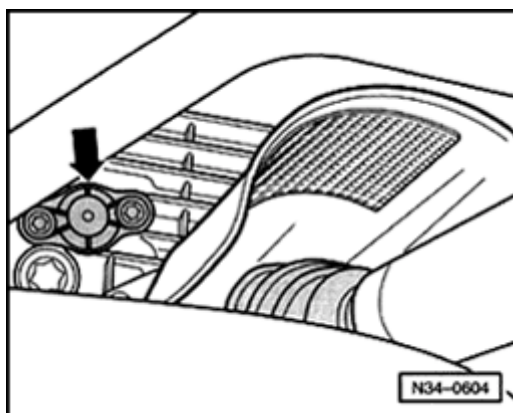
34-69

Removing and installing gear lock for 5th and reverse gear



A

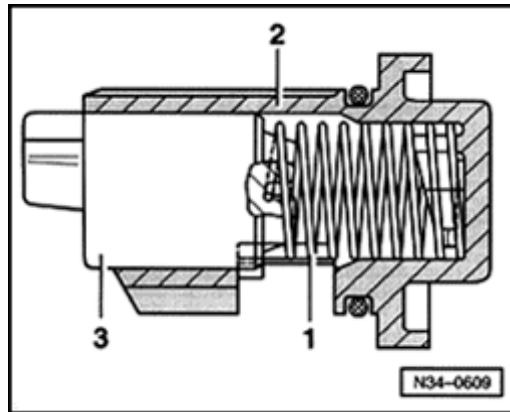
- Remove heat shield (arrow -2-) above right drive axle.
- Detach heat shield (arrow -1-) above right drive axle and pivot downward.



A

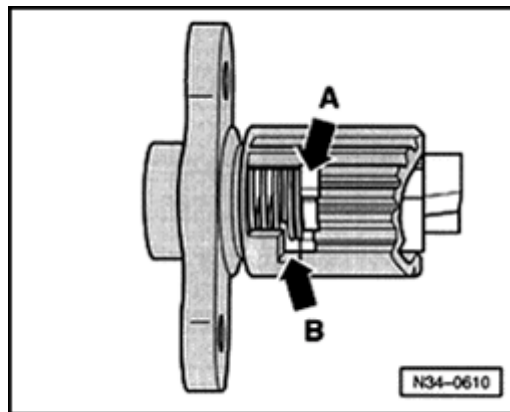
- Remove gear lock (arrow).

Assembling gear lock



A

- Insert spring -1- into housing -2- and, while applying light pressure, turn spring to left until it locates in base of housing.
 - Insert bushing -3- onto spring so bent end of spring locates into groove properly.
 - Push bushing against spring and turn approximately one turn to left, until lug on bushing aligns with groove in housing.
 - Press lug of bushing into groove in housing onto stop.
 - Turn bushing to right and release.
- The bushing will spring into the correct position.



A

Installation position of bushing:

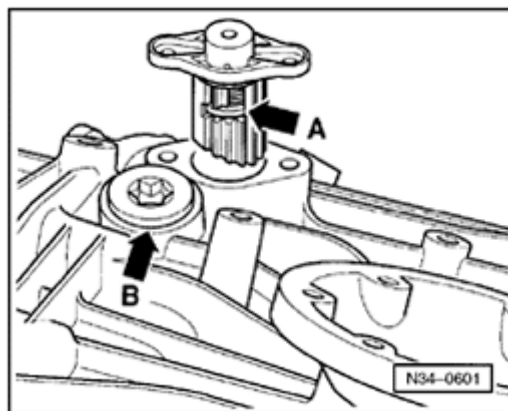
- Lug (arrow -A-) of bushing must always face away from groove in housing (arrow -B-).

Checking installation position:

- Turn bushing to left and release.

The bushing should spring back into position; the lug must be against the stop (direction indicated by arrow -A-).

34-71



- ✦ Installation position of complete gear lock in transmission:
The recess (arrow -A-) faces bolt (arrow -B-).