

Torque tube, disassembling, assembling and overview

Note:

Torque tube, removing and installing ⇒ [page 39-95](#).

1 - Drive flange

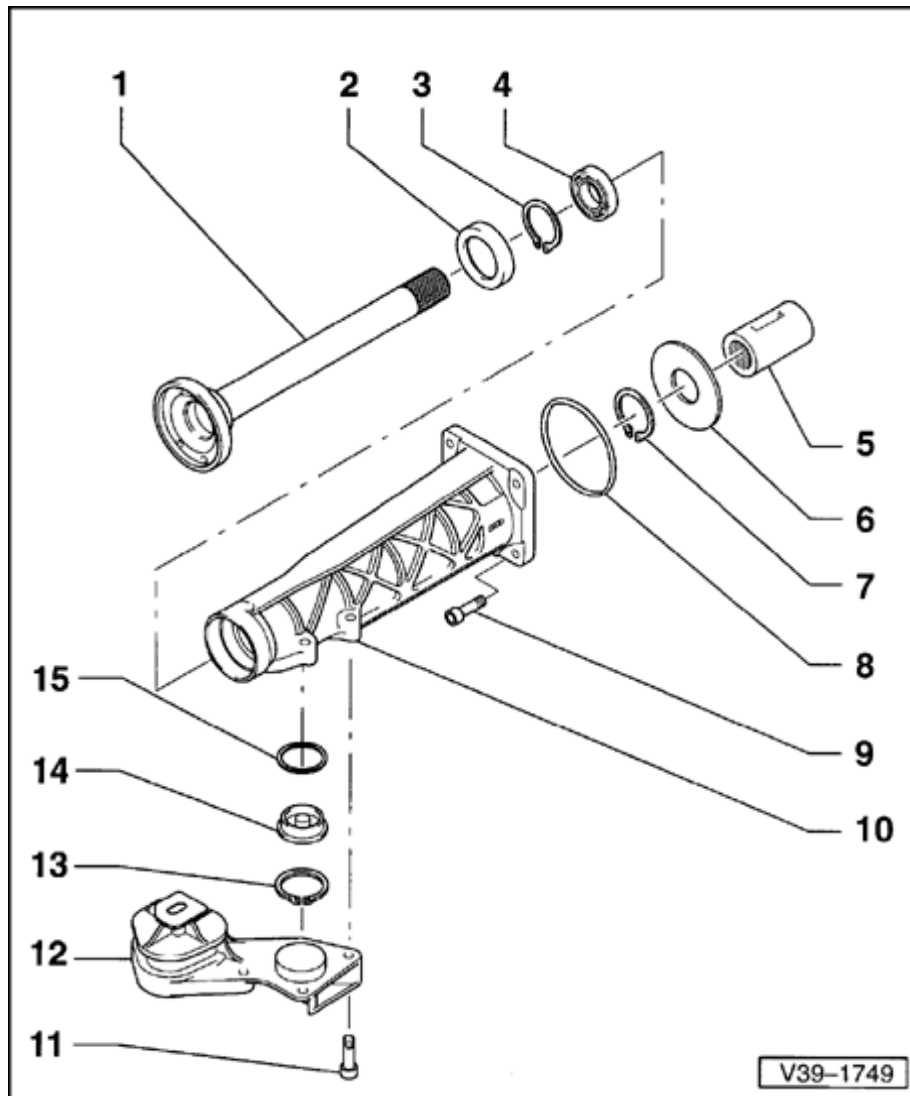
- ◆ Removing ⇒ [page 39-108](#)
- ◆ When installing, circlip item 7 - must be inserted into hole in housing at the same time ⇒ [page 39-112](#)

2 - Seal

- ◆ Levering out ⇒ [page 39-109](#)
- ◆ Driving in ⇒ [page 39-111](#)

3 - Snap ring

- ◆ Removing ⇒ [page 39-109](#)



4 - Grooved ball bearing for drive flange

- ◆ Pulling out ⇒ [page 39-110](#)
- ◆ Pressing in ⇒ [page 39-111](#)

5 - Sleeve

- ◆ Pulling off ⇒ [page 39-107](#)
- ◆ Pressing on ⇒ [page 39-112](#)

6 - Diaphragm plate

- ◆ Only press out if damaged
- ◆ Installing ⇒ [page 39-110](#)

7 - Snap ring

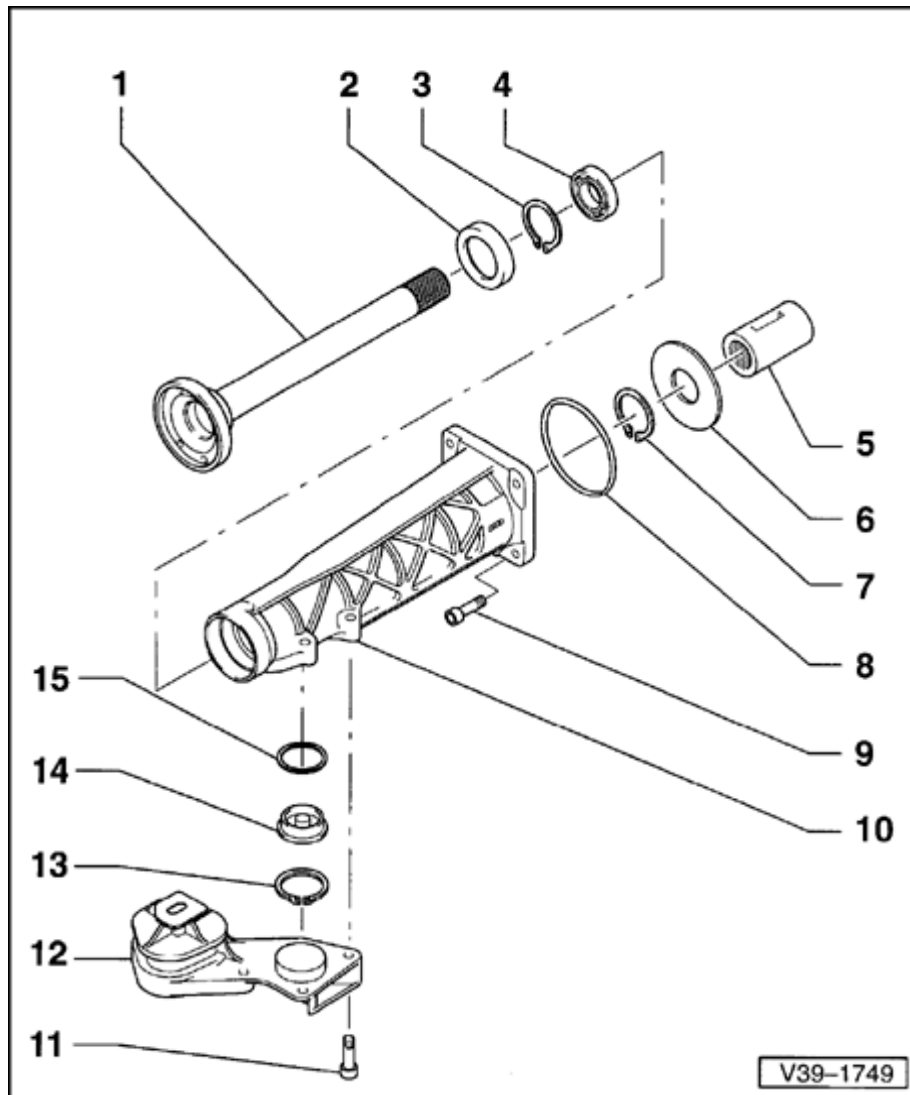
- ◆ Spread for removing flange shaft ⇒ [page 39-108](#)

8 - O-ring

- ◆ Always replace

9 - Bolt - 35 Nm

- ◆ For securing torque tube to rear final drive housing



10 - Torque tube

11 - Bolt - 40 Nm

◆ For securing final drive mount to torque tube

12 - Transmission support

13 - Snap ring

◆ Removing ⇒ [page 39-107](#)

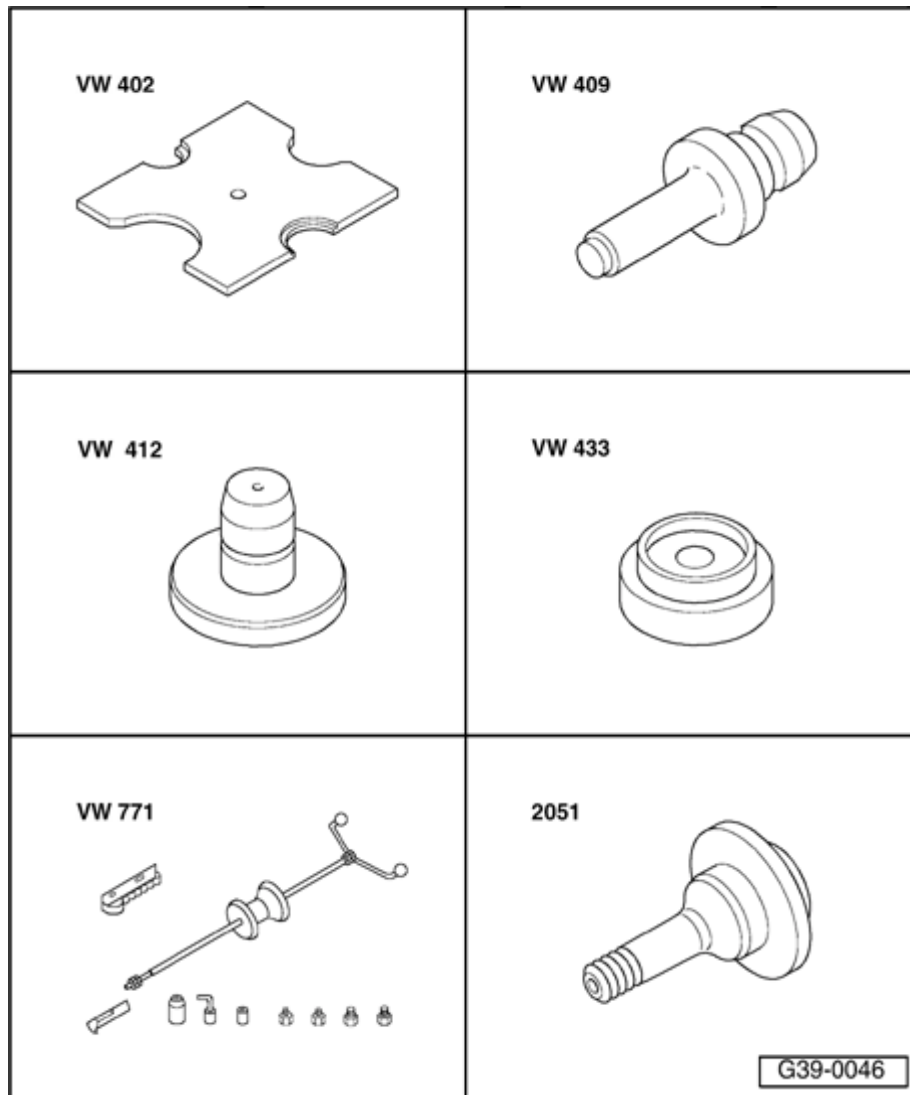
14 - Concealment cap

◆ Removing ⇒ [page 39-107](#)

15 - O-ring

◆ Always replace

39-105

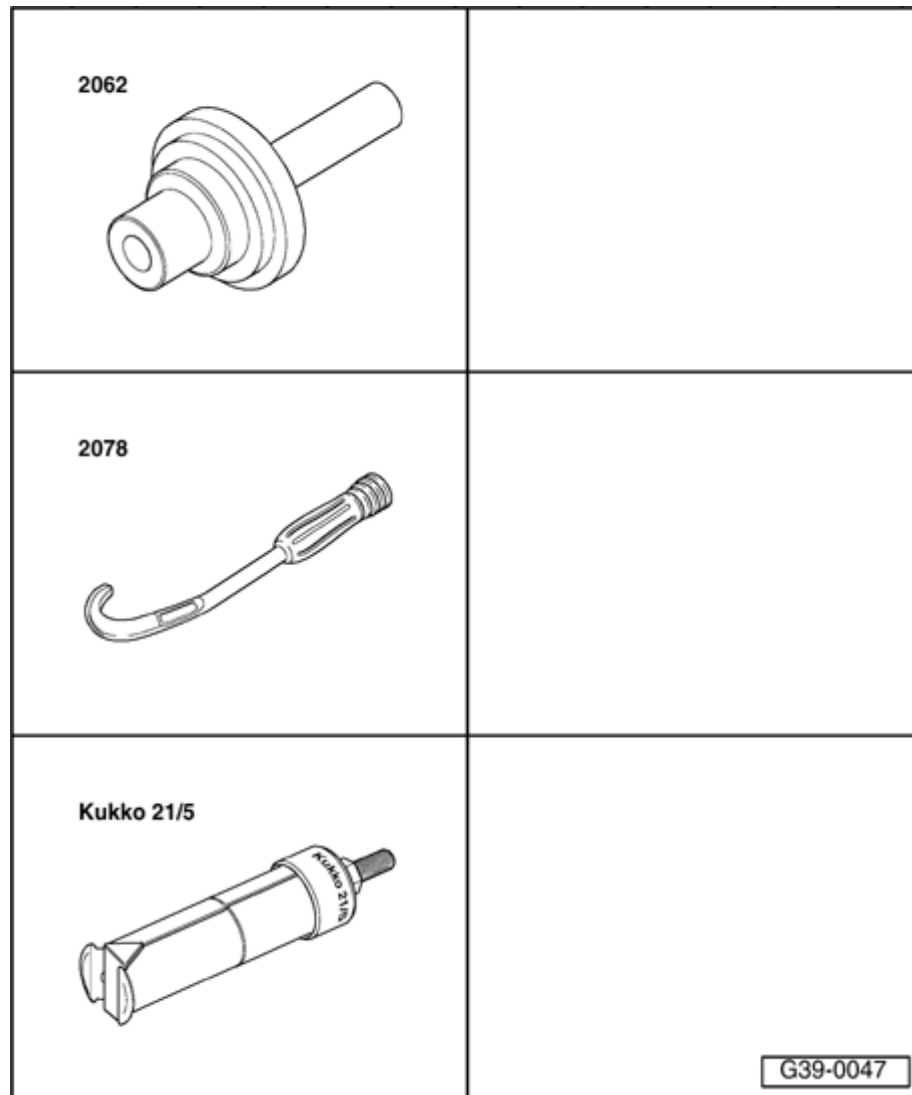


Torque tube, disassembling and assembling

Special tools and equipment

- ◆ VW402 thrust plate
- ◆ VW409 punch
- ◆ VW412 punch
- ◆ VW433 thrust pad
- ◆ VW 771 slide hammer-complete set with 771/15 threaded piece
- ◆ 2051 arbor

39-106



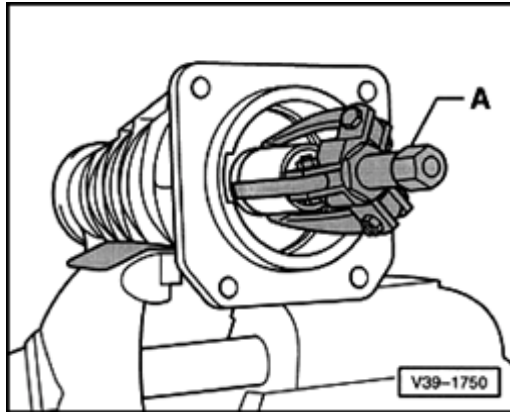
- ◆ 2062 driver
- ◆ 2078 tappet tensioner
- ◆ Kukko 21/5 extractor

Note:

Removing and installing torque tube ⇒ [page 39-95](#).

Disassembly

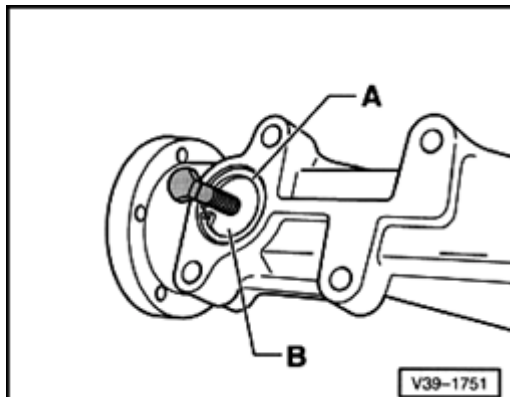
- Clamp torque tube in vise with protective pads.

**A**

- Pull off sleeve.

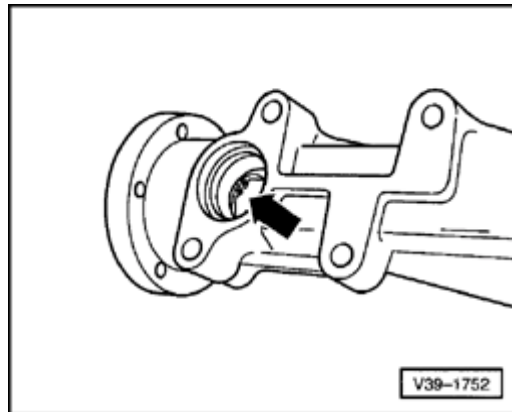
A - Internal puller 30 to 37 mm, e.g. Kukko 21/5 extractor

- Remove transmission mount.

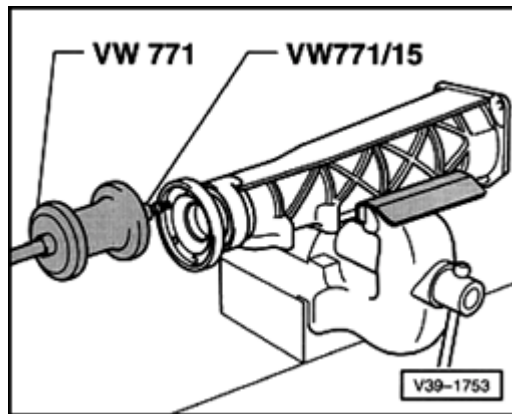
**A**

- Remove circlip -A-.
- Thread M8 bolt into threaded hole of cap -B- and pull out cap.

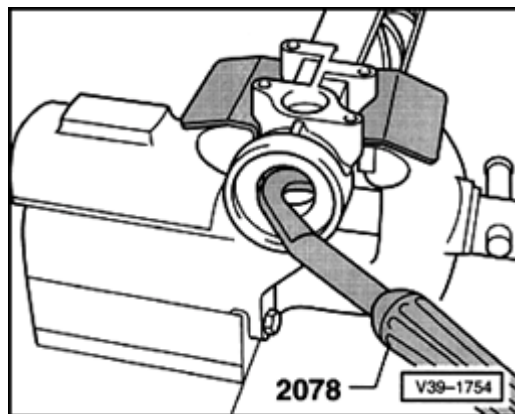
39-108



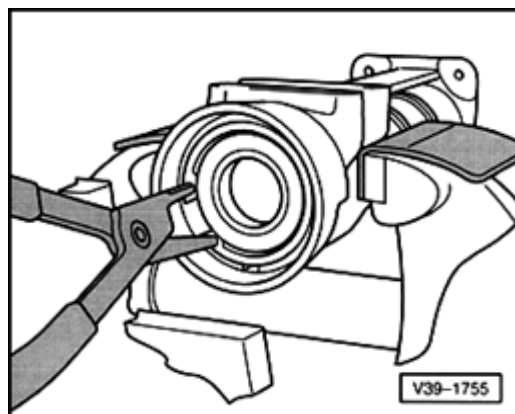
- A**
- Expand circlip -arrow- on flange shaft and slide in direction of splines.



- A**
- Remove drive flange.
 - Remove circlip from torque tube.

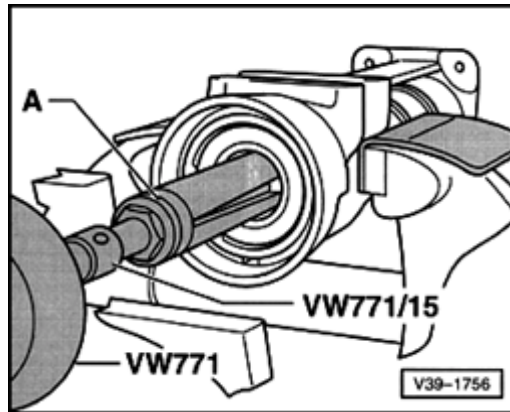


A - Pry out gasket.



A - Remove circlip.

39-110



A

- Pulling out grooved ball bearing for drive flange.

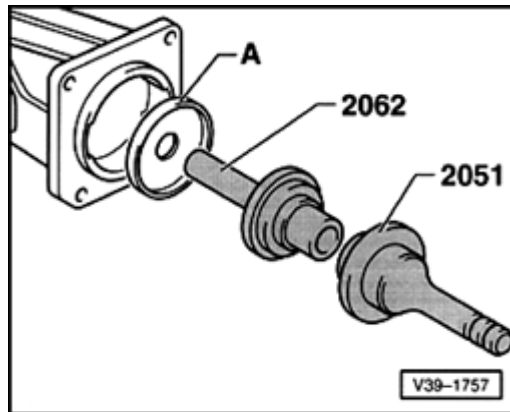
A - Internal puller 30 to 37 mm, e.g. Kukko 21/5 extractor

Note:

The bearing is damaged during removal.

Only if the diaphragm plate is damaged:

- If the diaphragm plate is damaged, press it out together with drive flange.

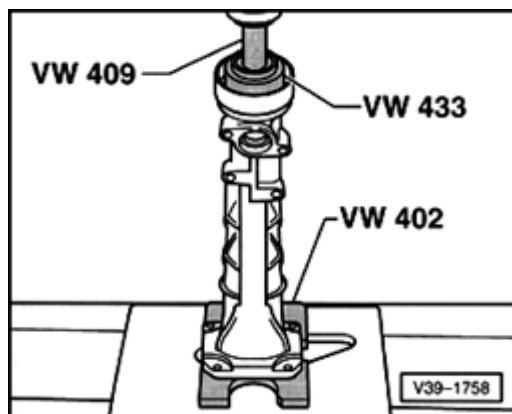


A

- To install, drive in diaphragm plate -A- up to stop.

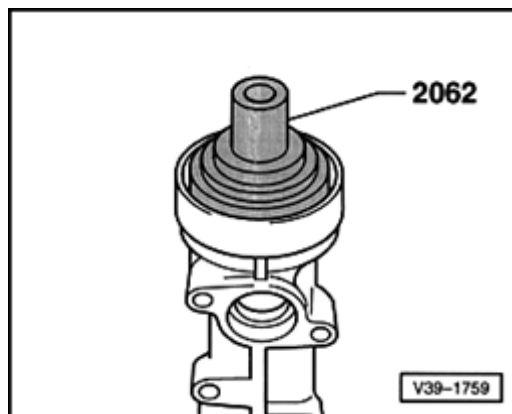
39-111

Assembly



A

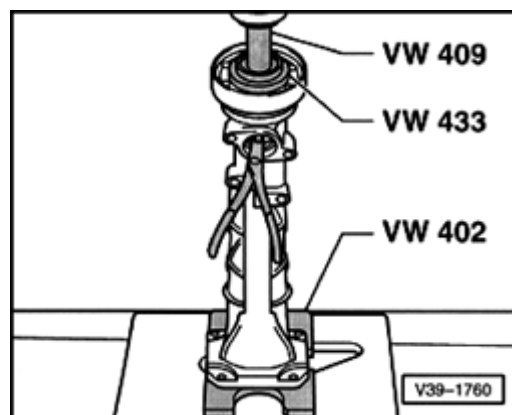
- Press grooved ball bearing into torque tube.
- Insert outer circlip.
- Fill seal between sealing lip and dust lip with multi-purpose grease.



A

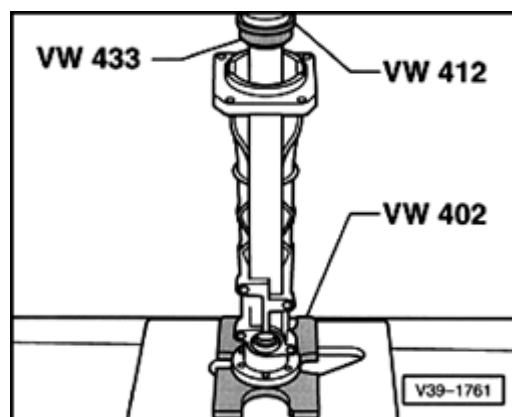
- Drive in seal to stop.

39-112



A

- Insert circlip into torque tube and hold using pliers, press in drive flange.
- Insert circlip into groove.



A

- Press sleeve onto drive flange up to stop.
- Install cap with seal.
- Insert circlip.
- Install final drive mount.
- Position O-ring on torque tube.