

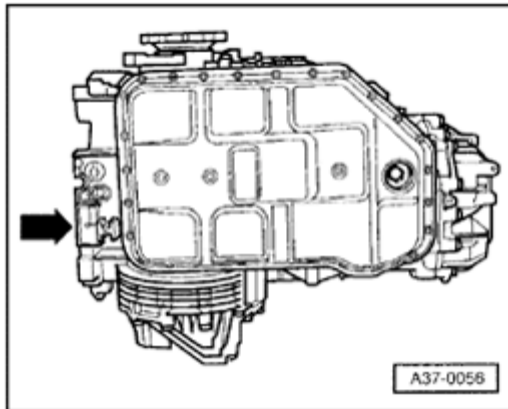
Transmission identification

The 5-speed automatic transmission 01V is installed in the Audi A4 1996 ➤ in conjunction with the 4 and 6-cylinder engines. Allocation ⇒ [Page 00-4](#) .

Code letter allocation at transmission

- Transmission code letters are located on the data plate under the transmission (arrow).

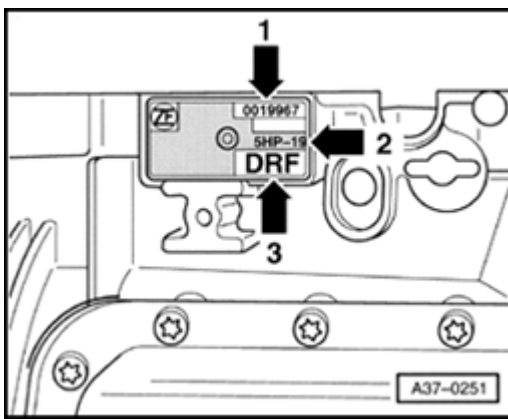
There is another identical data plate on side of transmission which is not accessible with the transmission installed.



- Transmission code number and transmission serial number.

Transmission serial number (arrow 1), Transmission identification (arrow 2), Code letter (arrow 3)

The transmission code letters are also listed on the vehicle data plates.



5-speed automatic transmission 01V, notes

Self-study program No.. 180 informs extensively about the function of this transmission.

Torque converter

The torque converter is equipped with a lock-up clutch. The lock-up clutch is closed load- and speed-dependant with minimum pulsations and mechanically drives the 3., 4. and 5. gear independent of slip.

Transmission

5-speed automatic transmission 01V is equipped with 5 hydraulically activated forward gears. By passing the torque converter slip, these forward gears become mechanically driven gears if the lock-up clutch is closed.

Hydraulic control

There is a distinction made between two types of transmission. Transmissions with hydraulic control E17, the sensor for transmission RPM (inductive sensor) is secured to bottom of valve body. Transmissions with hydraulic control E18/2, the sensor for transmission RPM (hall effect sensor) is secured to transmission housing behind valve body.

Information regarding which transmission is installed can be found in tables ⇒ [page 00-4](#) onward.

On Board Diagnostic (OBD)

On Board Diagnostic (OBD) is described in:

⇒ [Repair Manual, 5 Spd. Automatic Transmission 01V On Board Diagnostic \(OBD\), Repair Group 01](#)

Code letters, allocation, ratios, equipment

Front Wheel Drive (FWD)

Automatic transmission		01V.J	01V.F	01V.F
Transmission	Code letters	DDT	DRD	EBX
	Manufactured from	09.96	03.97	07.99
	to	08.99	07.99	
Torque converter	Code letters	M28	F31	F31
Allocation	Model	Audi A4 1996 ➤ USA	Audi A4 1996 ➤ USA	Audi A4 1996 ➤ USA
	Engine	1.8 L 5V - 110 kW	2.8 L 5V - 142 kW	2.8 L 5V - 142 kW
Ratios	1. Gear	3.665	3.665	3.665
	2. Gear	1.999	1.999	1.999
	3. Gear	1.407	1.407	1.407
	4. Gear	1.000	1.000	1.000
	5. Gear	0.742	0.742	0.742
	Reverse gear	4.096	4.096	4.096

Valve body allocation according to transmission code letters

⇒ *Parts Catalog*

00-5

Transmission	Code letters		DDT	DRD	EBX
Intermediate drive	Number of teeth	Drive gear	29	29	29
		Output gear	35	35	35
	Ratio		1.207	1.207	1.207
Final drive	Number of teeth	Drive pinion	11	11	11
		Ring gear	34	30	30
	Ratio		3.091	2.727	2.727
CAN-bus			without CAN-bus	with CAN-bus	with CAN-bus
E-Gas ¹⁾			without E-Gas	without E-Gas	with E-Gas
Hydraulic control			Park/Neutral Position (PNP) Switch -E17-	Park/Neutral Position (PNP) Switch -E17-	Rear Fog Light Switch -E18-/2

1) "E-Gas" is the general abbreviation for electronic engine power regulation, more information on this can be found in self-study program No.. 210.

Automatic transmission		01V.J	01V.J	01V.J
Transmission	Code letters	EFP	EFP	EKC
	Manufactured from to	09.99	05.00	08.99
Torque converter	Code letters	M28	M28	F31
Allocation	Model	Audi A4 1996 ➤ USA	Audi A4 1996 ➤ USA	Audi A4 1996 ➤ USA
	Engine	1.8 L 5V - 110 kW 210 Nm (LEV)	1.8 L 5V - 125 kW 240 Nm (ULEV)	2.8 L 5V - 142 kW
Ratios	1. Gear	3.665	3.665	3.665
	2. Gear	1.999	1.999	1.999
	3. Gear	1.407	1.407	1.407
	4. Gear	1.000	1.000	1.000
	5. Gear	0.742	0.742	0.742
	Reverse gear	4.096	4.096	4.096

Valve body allocation according to transmission code letters

⇒ *Parts Catalog*

00-7

Transmission	Code letters		EFP	EFP	EKC
Intermediate drive	Number of teeth	Drive gear	29	29	29
		Output gear	35	35	35
	Ratio		1.207	1.207	1.207
Final drive	Number of teeth	Drive pinion	11	11	11
		Ring gear	34	34	34
	Ratio		3.091	3.091	3.091
CAN-bus			with CAN-bus	with CAN-bus	with CAN-bus
E-Gas ¹⁾			with E-Gas	with E-Gas	with E-Gas
Hydraulic control			Rear Fog Light Switch - E18-/2	Rear Fog Light Switch - E18-/2	Rear Fog Light Switch - E18-/2

1) "E-Gas" is the general abbreviation for electronic engine power regulation, more information on this can be found in self-study program No.. 210.

Automatic transmission		01V.J	01V.J
Transmission	Code letters	EZS	EZZ
	Manufactured from to	06.00	06.00
Torque converter	Code letters	A33	M28
Allocation	Model	Audi A4 1996 ➤ USA	Audi A4 1996 ➤ USA
	Engine	1.8 L 5V - 125 kW	2.8 L 5V - 142 kW
Ratios	1. Gear	3.665	3.665
	2. Gear	1.999	1.999
	3. Gear	1.407	1.407
	4. Gear	1.000	1.000
	5. Gear	0.742	0.742
	Reverse gear	4.096	4.096

Valve body allocation according to transmission code letters

⇒ *Parts Catalog*

Transmission	Code letters		EZS	EZZ
Intermediate drive	Number of teeth	Drive gear	29	29
		Output gear	35	35
	Ratio		1.207	1.207
Final drive	Number of teeth	Drive pinion	11	11
		Ring gear	34	34
	Ratio		3.091	3.091
CAN-bus			with CAN-bus	with CAN-bus
E-Gas ¹⁾			with E-Gas	with E-Gas
Hydraulic control			Rear Fog Light Switch -E18-/2	Rear Fog Light Switch -E18-/2

1) "E-Gas" is the general abbreviation for electronic engine power regulation, more information on this can be found in self-study program No.. 210.

00-10

All Wheel Drive (AWD)

Automatic transmission		01V.4	01V.4	01V.4
Transmission	Code letters	DKB	DTV	EFQ
	Manufactured from	07.96	03.97	08.98
	to	02.97	07.99	
Torque converter	Code letters	M28	M28	M28
Allocation	Model	Audi A4 1996 ➤ USA	Audi A4 1996 ➤ USA	Audi A4 1996 ➤ USA
	Engine	1.8 L 5V - 110 kW	1.8 L 5V - 110 kW	1.8 L 5V - 110 kW
Ratios	1. Gear	3.665	3.665	3.665
	2. Gear	1.999	1.999	1.999
	3. Gear	1.407	1.407	1.407
	4. Gear	1.000	1.000	1.000
	5. Gear	0.742	0.742	0.742
	Reverse gear	4.096	4.096	4.096

Valve body allocation according to transmission code letters

⇒ *Parts Catalog*

00-11

Transmission	Code letters		DKB	DTV	EFQ
Intermediate drive-Va	Number of teeth	Drive gear	29	29	29
		Output gear	35	35	35
	Ratio		1.207	1.207	1.207
Final drive-Va	Number of teeth	Drive pinion	11	11	11
		Ring gear	34	34	34
	Ratio		3.091	3.091	3.091
intermediate drive-HA	Number of teeth	Drive gear	41	41	41
		Output gear	37	37	37
	Ratio		0.902	0.902	0.902
Final drive-HA	Number of teeth	Drive pinion	9	9	9
		Ring gear	37	37	37
	Ratio		4.111	4.111	4.111
CAN-bus			without CAN-bus	without CAN-bus	with CAN-bus
E-Gas ¹⁾			without E-Gas	without E-Gas	with E-Gas

Hydraulic control	Park/Neutral Position (PNP) Switch -E17-	Park/Neutral Position (PNP) Switch -E17-	Rear Fog Light Switch -E18-/2
-------------------	--	--	-------------------------------

1) "E-Gas" is the general abbreviation for electronic engine power regulation, more information on this can be found in self-study program No.. 210.

00-12

Automatic transmission		01V.3	01V.3	01V.4
Transmission	Code letters	DRN	ECG	FAL
	Manufactured from	03.97	08.99	06.00
	to	08.99		
Torque converter	Code letters	F31	F31	A33
Allocation	Model	Audi A4 1996 ➤	Audi A4 1996 ➤	Audi A4 1996 ➤
		USA	USA	USA
	Engine	2.8 L 5V - 142 kW	2.8 L 5V - 142 kW	1.8 L 5V - 125 kW
Ratios	1. Gear	3.665	3.665	3.665
	2. Gear	1.999	1.999	1.999
	3. Gear	1.407	1.407	1.407
	4. Gear	1.000	1.000	1.000
	5. Gear	0.742	0.742	0.742
	Reverse gear	4.096	4.096	4.096

Valve body allocation according to transmission code letters

⇒ *Parts Catalog*

00-13

Transmission	Code letters		DRN	ECG	FAL
Intermediate drive-Va	Number of teeth	Drive gear	29	29	29
		Output gear	35	35	35
	Ratio		1.207	1.207	1.207
Final drive-Va	Number of teeth	Drive pinion	11	11	11
		Ring gear	30	30	34
	Ratio		2.727	2.727	3.091
intermediate drive-HA	Number of teeth	Drive gear	41	41	41
		Output gear	33	33	37
	Ratio		0.805	0.805	0.902
Final drive-HA	Number of teeth	Drive pinion	9	9	9
		Ring gear	37	37	37
	Ratio		4.111	4.111	4.111
CAN-bus			with CAN-bus	with CAN-bus	with CAN-bus
E-Gas ¹⁾			without E-Gas	with E-Gas	with E-Gas
Hydraulic control			E17	E18/2	E18/2

1) "E-Gas" is the general abbreviation for electronic engine power regulation, more information on this can be found in self-study program No.. 210.

00-14

Automatic transmission		01V.4	01V.2	01V.Z
Transmission	Code letters	EKD	EDF	EMP
	Manufactured from to	08.99	04.99	08.99
Torque converter	Code letters	N28	D34	D34
Allocation	Model	Audi A4 1996 ➤ USA	Audi A4 1996 ➤ USA	Audi A4 1996 ➤ USA
	Engine	2.8 L 5V - 142 kW	2.7 L 5V - 184 kW	2.7 L 5V - 184 kW
Ratios	1. Gear	3.665	3.665	3.665
	2. Gear	1.999	1.999	1.999
	3. Gear	1.407	1.407	1.407
	4. Gear	1.000	1.000	1.000
	5. Gear	0.742	0.742	0.742
	Reverse gear	4.096	4.096	4.096

Valve body allocation according to transmission code letters

⇒ *Parts Catalog*

00-15

Transmission	Code letters		EKD	EDF	EMP
Intermediate drive-Va	Number of teeth	Drive gear	29	29	29
		Output gear	35	29	35
	Ratio		1.207	1.000	1.207
Final drive-Va	Number of teeth	Drive pinion	11	11	11
		Ring gear	34	34	32
	Ratio		3.091	3.091	2.909
Intermediate drive-HA	Number of teeth	Drive gear	41	43	41
		Output gear	37	34	37
	Ratio		0.902	0.791	0.902
Final drive-HA	Number of teeth	Drive pinion	9	9	9
		Ring gear	37	35	35
	Ratio		4.111	3.889	3.889
CAN-bus			with CAN-bus	with CAN-bus	with CAN-bus
E-Gas ¹⁾			with E-Gas	with E-Gas	with E-Gas
Hydraulic control			E18/2	E18/2	E18/2

1) "E-Gas" is the general abbreviation for electronic engine power regulation, more information on this can be found in self-study program No.. 210.

00-16

Automatic transmission		01V.Z	01V.Z	01V.4
Transmission	Code letters	FAQ	FHJ	FAS
	Manufactured from to	06.00	06.00	05.00
Torque converter	Code letters	F35	F35	N28
Allocation	Model	Audi A4 1996 ➤ USA	Audi A4 1996 ➤ USA	Audi A4 1996 ➤ USA
	Engine	2.7 L 5V - 184 kW	2.7 L 5V - 184 kW	2.8 L 5V - 142 kW
Ratios	1. Gear	3.665	3.665	3.665
	2. Gear	1.999	1.999	1.999
	3. Gear	1.407	1.407	1.407
	4. Gear	1.000	1.000	1.000
	5. Gear	0.742	0.742	0.742
	Reverse gear	4.096	4.096	4.096

Valve body allocation according to transmission code letters

⇒ *Parts Catalog*

00-17

Transmission	Code letters		FAQ	FHJ	FAS
Intermediate drive-Va	Number of teeth	Drive gear	29	29	29
		Output gear	35	35	35
	Ratio		1.207	1.207	1.207
Final drive-Va	Number of teeth	Drive pinion	11	11	11
		Ring gear	32	32	34
	Ratio		2.909	2.909	3.091
intermediate drive-HA	Number of teeth	Drive gear	41	41	41
		Output gear	37	37	37
	Ratio		0.902	0.902	0.902
Final drive-HA	Number of teeth	Drive pinion	9	9	9
		Ring gear	35	35	37
	Ratio		3.889	3.889	4.111
CAN-bus			with CAN-bus	with CAN-bus	with CAN-bus
E-Gas ¹⁾			with E-Gas	with E-Gas	with E-Gas
Hydraulic control			E18/2	E18/2	E18/2

1) "E-Gas" is the general abbreviation for electronic engine power regulation, more information on this can be found in self-study program nr. 210.

00-18

Automatic transmission		01V.4
Transmission	Code letters	FHH
	Manufactured from to	06.00
Torque converter	Code letters	N28
Allocation	Model	Audi A4 1996 ➤ USA
	Engine	2.8 L 5V - 142 kW
Ratios	1. Gear	3.665
	2. Gear	1.999
	3. Gear	1.407
	4. Gear	1.000
	5. Gear	0.742
	Reverse gear	4.096

Valve body allocation according to transmission code letters

⇒ *Parts Catalog*

00-19

Transmission	Code letters		FHH
Intermediate drive-Va	Number of teeth	Drive gear	29
		Output gear	35
	Ratio		1.207
Final Drive-Va	Number of teeth	Drive pinion	11
		Ring gear	34
	Ratio		3.091
Intermediate drive-HA	Number of teeth	Drive gear	41
		Output gear	37
	Ratio		0.902
Final drive-HA	Number of teeth	Drive pinion	9
		Ring gear	37
	Ratio		4.111
CAN-bus			with CAN-bus
E-Gas ¹⁾			with E-Gas
Hydraulic control			E18/2

1) "E-Gas" is the general abbreviation for electronic engine power regulation, more information on this can be found in self-study program nr. 210.