

Steering gear components

1 - Bolt and washer assembly

- ◆ 65 Nm (48 ft lb)

2 - Boot seal

- ◆ Check for cracks and abrasions

3 - Eccentric bolt

- ◆ Torx® T50
- ◆ Turn clockwise to disengage
- ◆ Turn counter-clockwise to engage

4 - Steering column

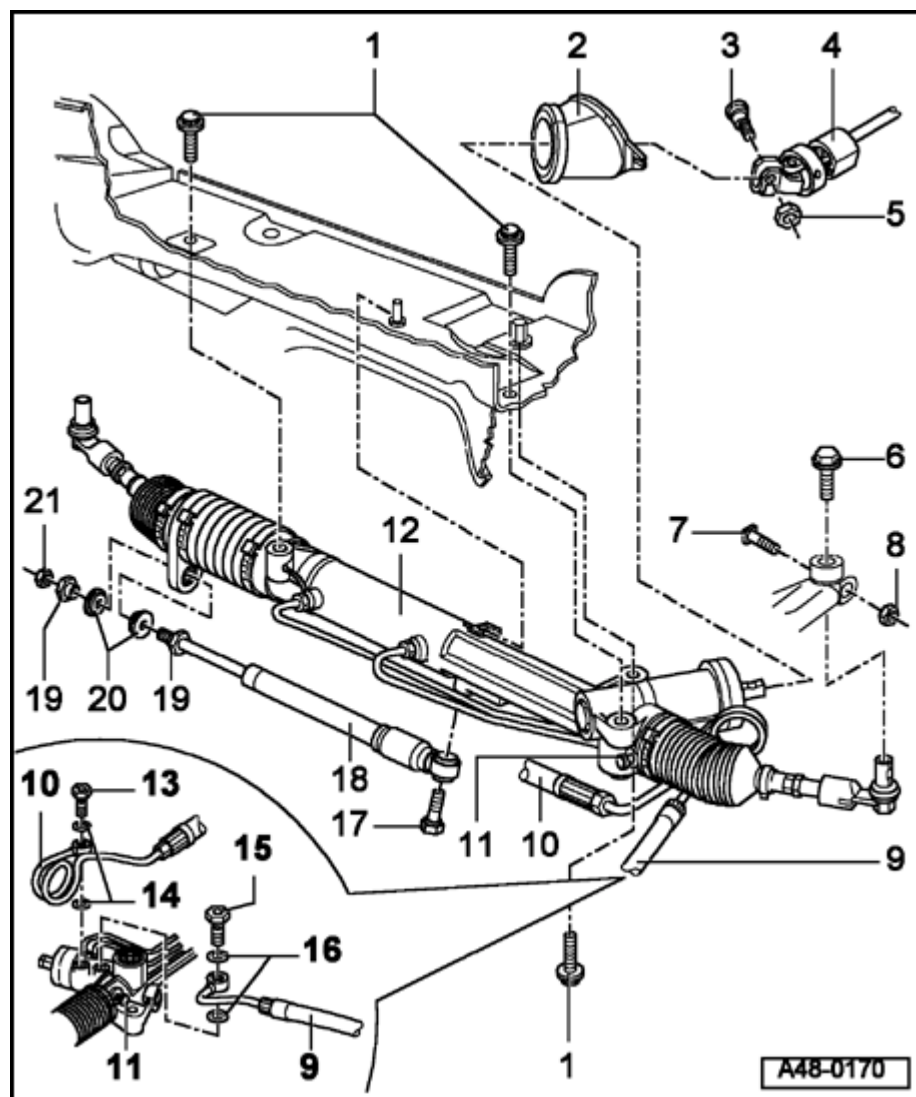
5 - Self-locking nut

- ◆ Always replace
- ◆ 40 Nm (30 ft lb)

6 - Bolt w/washer assembly

- ◆ 7 Nm (62 in. lb)
- ◆ For adjusting toe-in curve

7 - Bolt

**8 - Self-locking nut**

- ◆ Always replace
- ◆ 45 Nm (33 ft lb)

9 - Return hose**10 - Flexible hose****11 - Screw plug**

- ◆ 13 Nm (10 ft lb)
- ◆ For centering steering gear ⇒ [Fig. 1](#)

12 - Power steering gear with tie rods

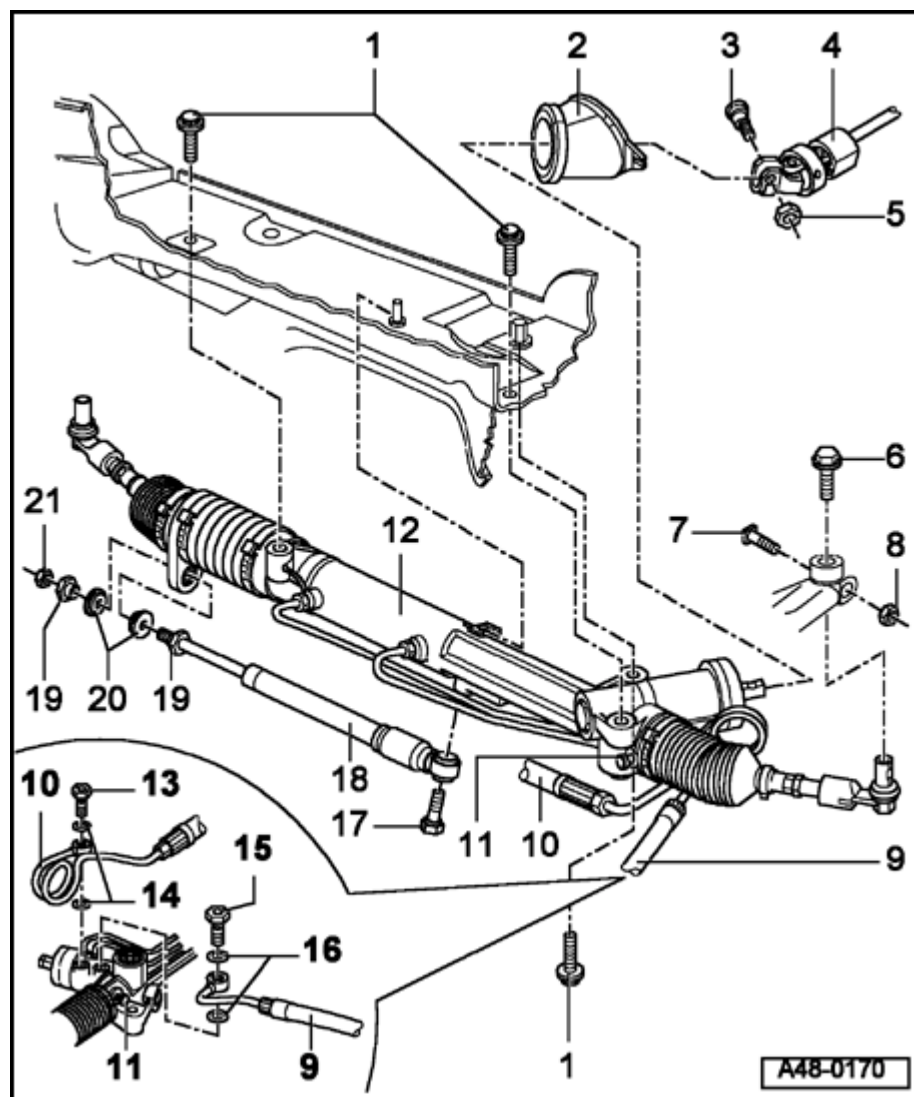
- ◆ Removing and installing ⇒ [page 48-5](#)

13 - Banjo bolt

- ◆ 40 Nm (30 ft lb)
- ◆ With integrated check valve

14 - Seal 14 x 20

- ◆ Always replace

**15 - Banjo bolt**

- ◆ 50 Nm (37 ft lb)

16 - Seal 16 x 22

- ◆ Always replace

17 - Bolt

- ◆ 35 Nm (26 ft lb)

18 - Steering damper

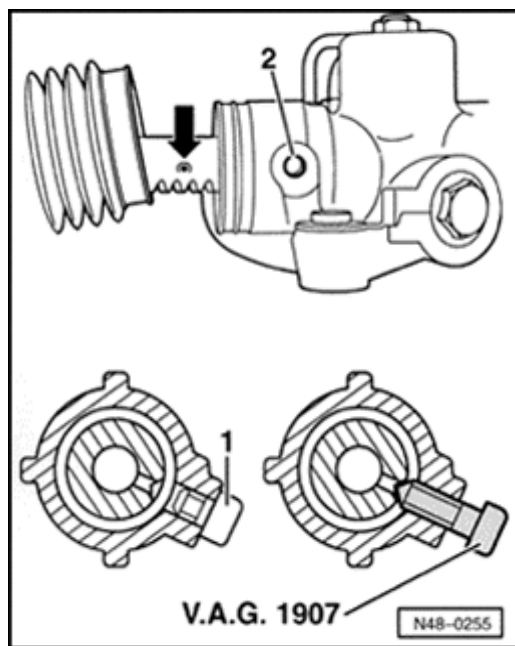
- ◆ 6-cyl. models
- ◆ 4-cyl models with 132 kW (177 Hp) m.y. 1998 ➤

19 - Bushing**20 - Rubber bushing**

- ◆ Two-piece

21 - Nut

- ◆ 10 Nm (7 ft lb)
- ◆ Counter-hold at hex in piston rod of steering damper to loosen and tighten



A

Fig. 1 Screw plug for centering steering gear

1 - Screw plug

2 - Threaded hole in steering gear