

Teves/Ate front brake calipers, servicing

Note:

- ◆ Install only the complete repair kit when performing servicing work.
- ◆ New brake calipers are filled with brake fluid and pre-bled.
- ◆ Apply a thin coating of assembly paste to brake cylinders, pistons and seals.

1 - Caps

- ◆ Insert into plastic bushing

2 - Guide pin

- ◆ 25 Nm (18 ft lb)

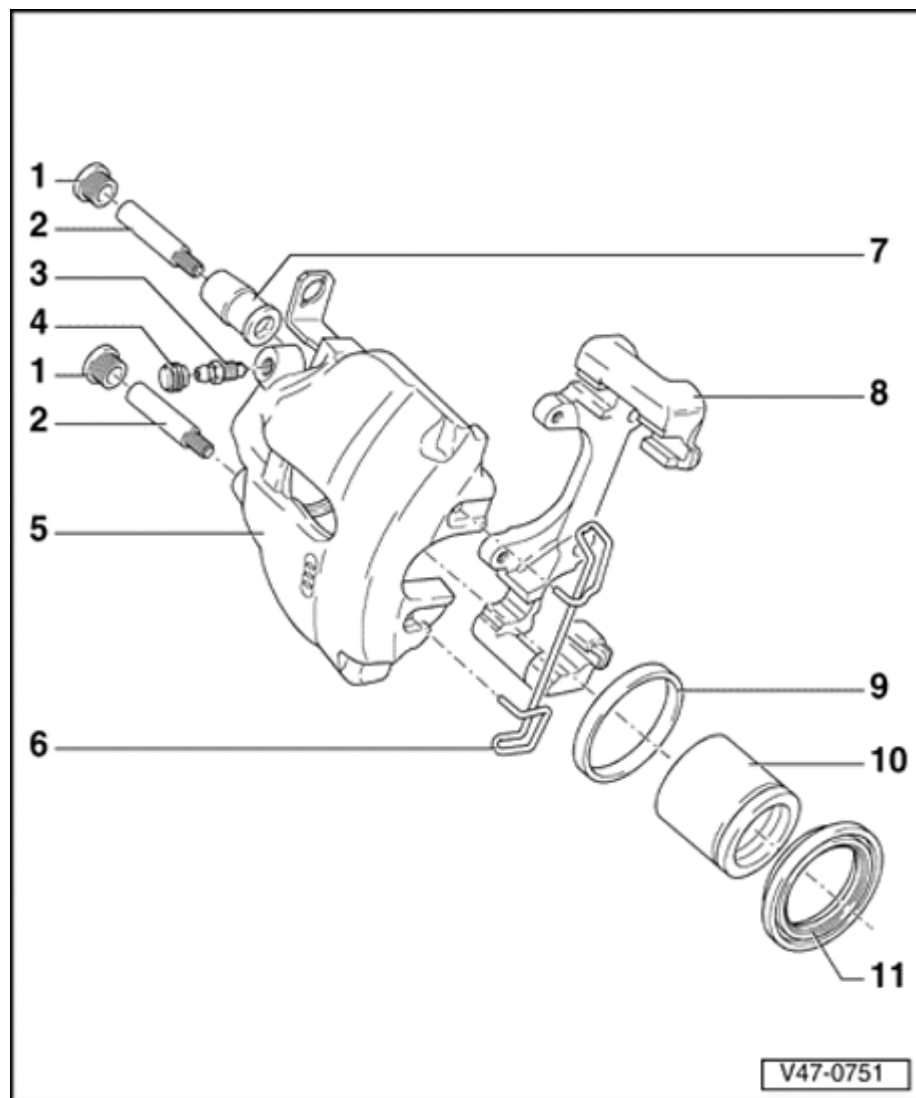
3 - Bleeder valve

- ◆ Apply a thin coating of assembly paste to the threads before installing

4 - Dust cap

- ◆ Install on bleeder valve

47-3

**5 - Brake caliper housing****6 - Retaining spring**

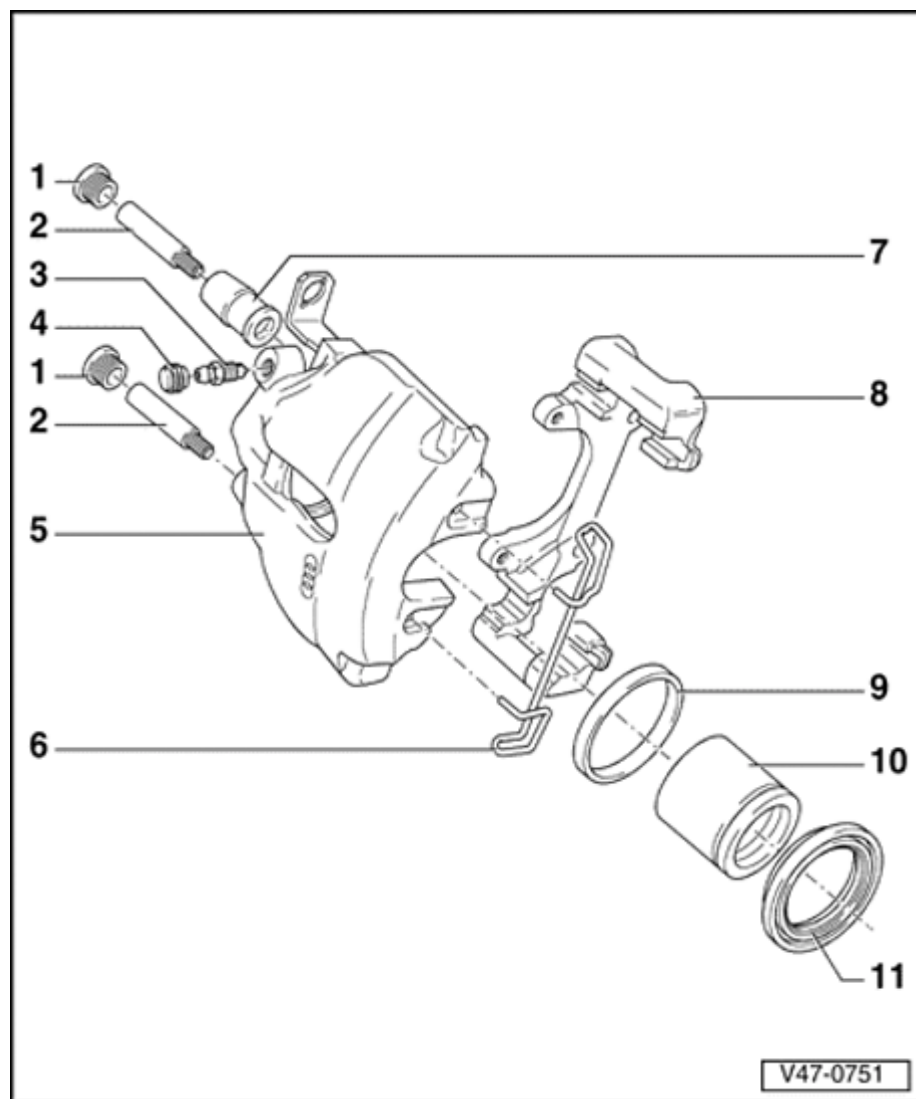
- ◆ Insert the two ends into the holes of the brake caliper housing

CAUTION!

- ◆ *Once the spring ends are seated in the holes, press the retaining spring under the brake carrier.*
- ◆ *If the spring is not installed correctly, the outer brake pad alignment mechanism will not be able to compensate for wear, and increased pedal travel will result.*

7 - Plastic bushing

- ◆ Insert into brake caliper housing

**8 - Brake carrier**

- ◆ Bolt to brake caliper housing

9 - Seal**10 - Piston**

- ◆ Apply thin coat of assembly paste before installing
- ◆ Piston diameter: 57 mm (2.24 in.)

11 - Protective seal

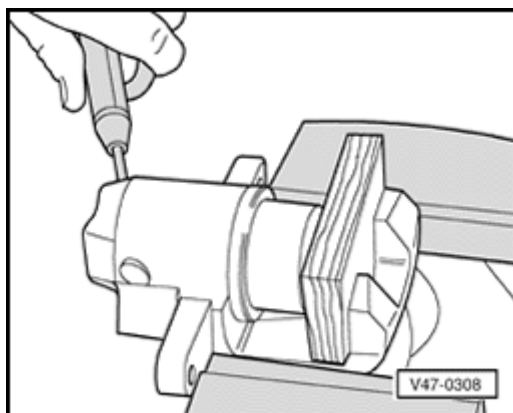
- ◆ Do not damage when installing the piston

Teves/Ate front brake caliper piston, removing and installing

Special tools and equipment

3409 wedge

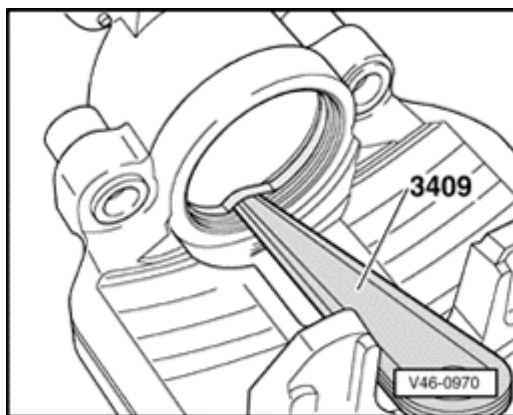
Removing



- ▲ - Force piston out of brake caliper housing using compressed air.

WARNING!

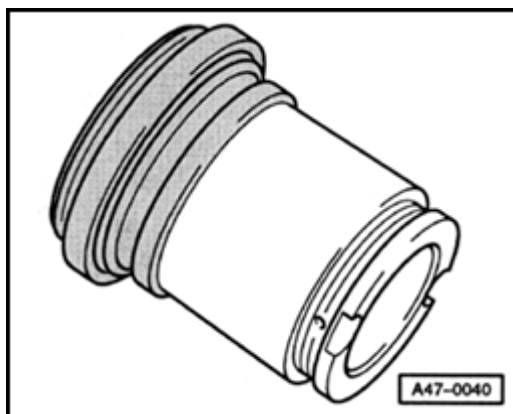
- ◆ **Risk of accident! Apply pressure gradually. Guard against the sudden release of the piston.**
- ◆ **Place a wooden block into the recess of the caliper housing to catch the piston so it is not damaged.**
- ◆ **Always wear safety glasses when carrying out this step.**



- ▲ - Using 3409 wedge, remove seal.

Note:

When removing make sure that the surface of the cylinder is not damaged.



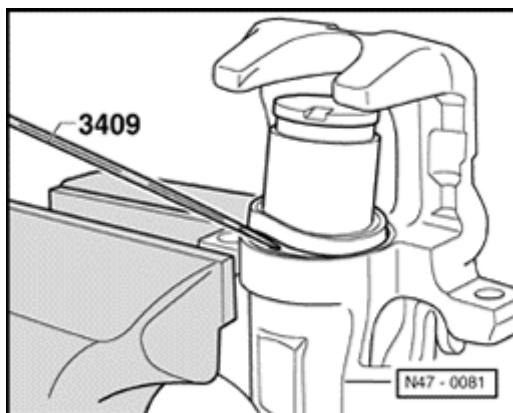
Installing

A

- Place protective seal with outer sealing lip on piston.
- Clean surfaces of piston and seal using methylated spirits only, then dry.
- Apply thin coat of assembly paste, part number G 052 150 A2 to piston and seal before installing.

CAUTION!

Part numbers are listed here for reference only. Always check with your Parts department for the latest information.



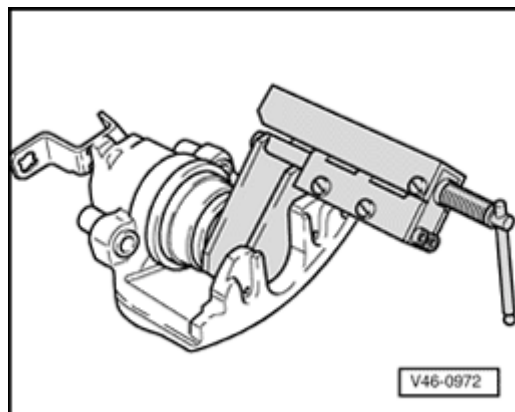
A

- Using 3409 wedge, insert inner sealing lip into cylinder groove.

Note:

Hold the piston in front of the caliper housing for this procedure.

47-7



- A** - Press piston into brake caliper housing using piston resetting tool.

Note:

The outer sealing lip of the protective seal will then locate in the piston groove.